



Triflex BTS-T

- 02 Triflex BTS-T
- 03 System Build Up and Finish Options
- 04 System Benefits
- 06 System Data Sheet
- 10 Model Specification
- 12 Sketch Details

Triflex BTS-T

Fast curing, thick layer, waterproofing and surfacing system for walkways, balconies and terraces over occupied premises - ETA certified fully reinforced waterproofing membrane

The Triflex BTS-T cold liquid applied, fully reinforced waterproofing and surfacing system was developed to provide all of the benefits of the long established Triflex BWS system, with the advantage of using our highly advanced, exceptionally fast curing PMMA resin technology for all layers of the system. The use of ultra fast cure technology minimises access restrictions and allows maximum productivity on site.

The system is suitable for both new build and refurbishment projects and the majority of deck constructions. The system is totally cold applied, compatible with a wide range of substrates (including asphalt) and offers a choice of finishes.

The reinforced waterproofing membrane based on Triflex ProTerra® is ETA certified and is a benchmark for the liquid applied industry.

The system is designed for both new build and refurbishment projects and the majority of deck constructions including domestic timber decks.

Note - Where a BBA certified system is required e.g. for NHBC projects refer to the Triflex BWS system.



System information:

System Build Up and Finish Options	System Benefits	System Data Sheet	Model Specification	Sketch Details
Details of the build up of the system and the available finish options	Details of - system, environmental and quality benefits	Details of - system properties, build up, substrate compatibility, and application	Triflex BTS-T	Standard details dealing with the majority of walkway, balcony and terrace details
Page 3	Pages 4-5	Pages 6-9	Pages 10-11	Pages 12-13

For further information on how Triflex BTS-T can be used to solve your walkway, balcony and terrace waterproofing and surfacing problems, please contact the Triflex Technical Team on 01785 819119.

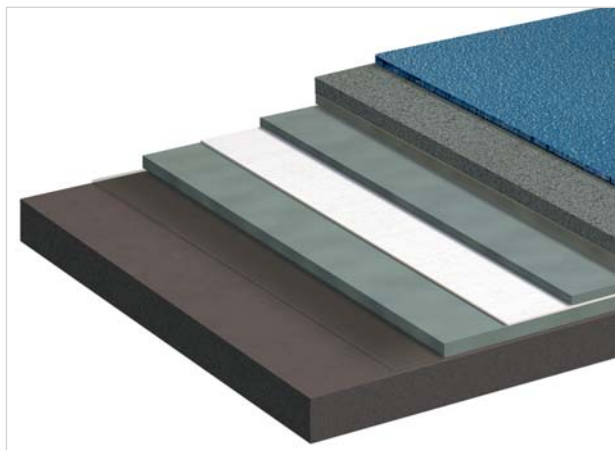


Triflex BTS-T System Build Up and Finish Options

Fast curing, thick layer, waterproofing and surfacing system for walkways, balconies and terraces over occupied premises - ETA certified fully reinforced waterproofing membrane

System Build Up and Finish Options

Build Up



Finish Options

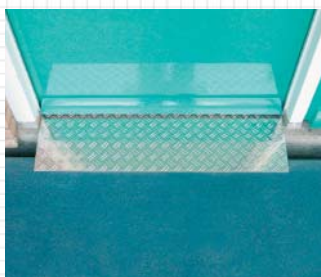


Large Grain
Crystal Quartz with
Pigmented Seal



Large Grain
Coloured Quartz
with Clear Seal

Note: For the full colour selection please refer to pages 11 to 13.



Triflex BTS-T

System Benefits

Fast curing, thick layer, waterproofing and surfacing system for walkways, balconies and terraces over occupied premises - ETA certified fully reinforced waterproofing membrane

-
- TOTALLY COLD APPLIED WITH EXCEPTIONALLY RAPID CURE TIMES**
- ⚡ All elements of the system are cold applied, avoiding the risks and insurance costs associated with hot works
 - ⚡ Avoidance of hot works is becoming increasingly important as many clients and building insurers are specifying "100% cold" works for their properties
 - ⚡ Adjacent flammable materials and / or structures require no further special protection during the installation of the system
 - ⚡ Time on site for the contractor is minimised
 - ⚡ Works on site can commence immediately with no waiting time for the heating of materials
 - ⚡ The risk of injury to operatives from the use of hot materials is eliminated
 - ⚡ With its exceptionally rapid cure times, areas are rapidly waterproofed and time on site is reduced
 - ⚡ Access restrictions are minimised as the system achieves full mechanical properties exceptionally quickly and all layers of the system can be trafficked relatively shortly after installation
 - ⚡ With exceptionally short 'rain proof' times, weather windows can be maximised to ensure the highest levels of productivity
 - ⚡ The contractor can leave site, confident that areas completed are totally secure
-
- CERTIFICATION**
- ⚡ The Triflex ProTerra® waterproofing membrane within the Triflex BTS-T system has been extensively tested to some of the most stringent test methods including ETAG 005 - refer to 'Properties' in the System Data Sheet
-
- OVERLAY VS STRIP AND REPLACE**
- ⚡ The Triflex BTS-T can be used for both refurbishment and new build projects
 - ⚡ The unique properties of the Triflex BTS-T allow virtually all common walkway, balcony and terrace substrates to be overlaid, including asphalt
 - ⚡ The ability to overlay the existing construction decreases disruption to the occupier, and as the area can be completed section by section with seamless continuity, there is no increased risk of water ingress during the works
 - ⚡ Without the need to strip the existing coverings, Health and Safety is improved, time on site is minimised, the requirement for temporary waterproofing avoided, and overall costs reduced
-
- AESTHETIC ENHANCEMENT**
- ⚡ Available with a choice of either large grain crystal quartz with a pigmented seal coat, large grain coloured quartz with a clear seal coat or basalt with a Traffic Grey seal coat, the Triflex BTS-T system can be used to add colour and design to walkways, balconies and terraces
 - ⚡ All Triflex resins are UV stable and use UV stable inorganic pigments meaning that colour is retained over time
-
- UNIQUE FULLY REINFORCED APPLICATION**
- ⚡ Meaning that all details and potential areas of weakness can be safely incorporated within the same homogenous waterproofing and surfacing membrane
 - ⚡ Through incorporation of the Triflex reinforcement with our unique resin technology, the Triflex ProTerra® ETA certified membrane within the Triflex BTS-T system provides long term waterproofing security for the structure through its exceptional long term resistance to regular and unforeseen movement and flexural fatigue
 - ⚡ Because the system is applied as a liquid it can be shaped to suit any form, allowing even the most complex of areas to be treated in the minimum time
 - ⚡ The thixotropic liquid applied Triflex ProDetail® for the interface details allows vertical surfaces to be safely incorporated into the project
 - ⚡ The Triflex ProTerra® reinforced membrane is designed to deal with the interfaces between a wide range of substrates with different coefficients of expansion without risk
 - ⚡ As a fabric, the Triflex reinforcement provides a valuable visible thickness control during the application of the materials
 - ⚡ Even ancillary materials for highly complex details incorporate our unique reinforced technology
-
- TOUGH AND DURABLE**
- ⚡ The Triflex BTS-T system features a heavy duty wearing course fully filled with either crystal quartz, coloured quartz or basalt aggregate
 - ⚡ The aggregate is tightly bound within the resin matrix and provides the wearing layer, the anti-skid properties and long term resistance to damage
 - ⚡ Unlike the more commonly available resins, Triflex resins achieve excellent inter layer adhesion, do not suffer inter layer delamination and have excellent resistance to the day to day forces imposed on walkway, balcony and terrace systems
-
- THICK LAYER BUILD UP**
- ⚡ With a finished thickness in excess of 4mm, the Triflex BTS-T has exceptional durability, helps mask deck imperfections and provides a more aesthetically pleasing, easier to maintain system
 - ⚡ The system thickness allows profiled substrates such as brushed concrete and crimped asphalt to be overlaid without the original profile reflecting through
-
- SEAMLESS - WITH NO JOINTS SEAMS OR FIXINGS**
- ⚡ The seamless Triflex BTS-T avoids potential areas of weakness - one weak joint, seam or fixing can compromise the integrity of the whole area
 - ⚡ Structural details can be accommodated without the requirement for mechanical fixings and terminations which can be prone to failure
-

Triflex BTS-T

System Benefits

Fast curing, thick layer, waterproofing and surfacing system for walkways, balconies and terraces over occupied premises - ETA certified fully reinforced waterproofing membrane

- ELASTOMERIC AND DYNAMIC CRACK BRIDGING** :: The Triflex BTS-T fully reinforced waterproofing and surfacing system is tested and proven resistant to both existing and unforeseen cracking

- FULLY BONDED WITH EXCELLENT INTER LAYER ADHESION** :: Being fully bonded, underflow of water directly beneath the membrane is prevented
 :: The inter layer adhesion of the system is generally greater than the cohesive strength of the substrate, virtually eliminating the risk of debonding or delamination

- LOW TEMPERATURE CURING** :: Works can be carried out all year round and in the majority of climatic conditions, allowing the project to be completed when required, not when dictated by the temperature

- CHEMICAL RESISTANT** :: The Triflex BTS-T system offers high levels of chemical resistance

- SIMPLE MAINTENANCE** :: Triflex walkway, balcony and terrace systems are designed to be low maintenance, minimising in service costs
 :: The system can be simply cleaned - refer to 'Maintenance and Care'
 :: Should additions need to be made, these can be incorporated quickly and easily

Environmental benefits

- COMMITMENT TO THE ENVIRONMENT** :: The Triflex Environmental Policy is certified under DIN ISO 14001
 :: The Triflex BTS-T system is solvent, isocyanate and halogen free, minimising its environmental impact

Quality benefits

- QUALITY ASSURED MANUFACTURING** :: As all materials are manufactured to ISO9001 quality assurance standards you can be assured of consistently high quality

- QUALITY DESIGN, SPECIFICATION ASSISTANCE AND SUPPORT** :: The Triflex Technical Team can assist in all areas of the design and specification process and provide ongoing support through to delivery of the project

- QUALITY INSTALLATION** :: Triflex walkway, balcony and terrace systems are only installed by our contracting partners who have been specially selected for their ability to provide the highest level of service to the client

Triflex BTS-T

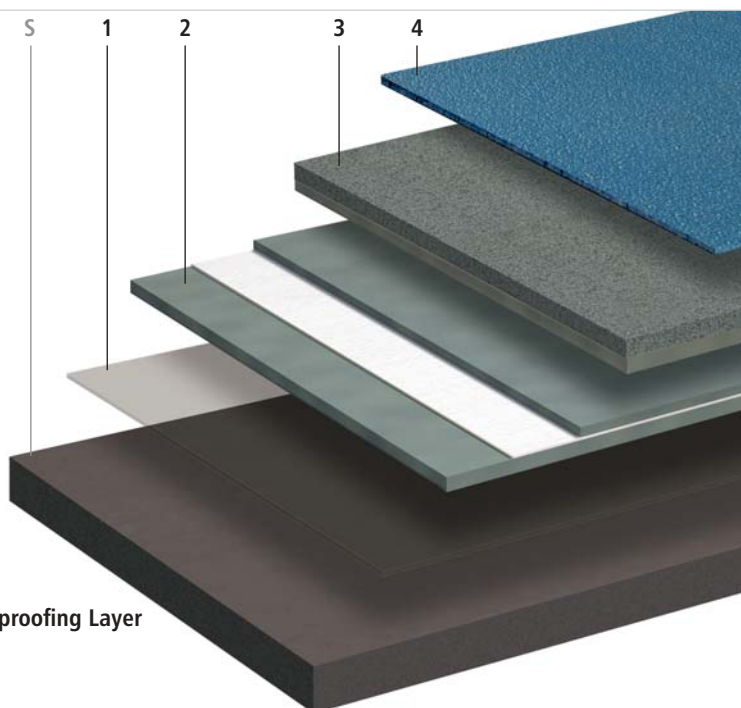
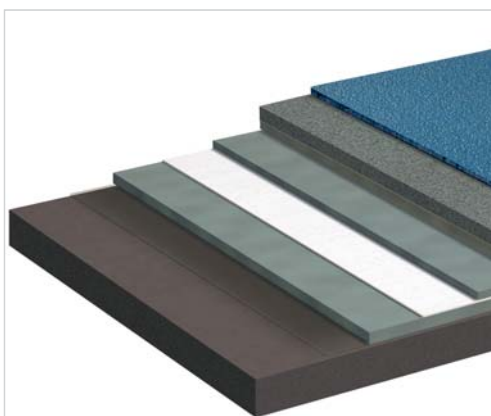
System Data Sheet

Fast curing, thick layer, waterproofing and surfacing system for walkways, balconies and terraces over occupied premises - ETA certified fully reinforced waterproofing membrane

Properties

- Totally waterproof, thick layer system (>4mm Dry Film Thickness)
- Fully reinforced liquid applied materials
- ETA certified waterproofing membrane - no. 04/0019 (25 year durability statement)
- Available with the following finish options:
 - 0.7 - 1.2mm crystal quartz with pigmented seal
 - 0.7 - 1.2mm coloured quartz with clear seal
 - 1.0 - 1.6mm basalt with Traffic Grey pigmented seal
- Seamless - with no joints, seams or fixings
- Elastomeric and dynamic crack bridging
- Anti-skid
- Tough, highly impact and abrasion resistant
- Durable - resistant to static and dynamic loads
- Totally cold applied
- Exceptionally fast curing
- Bridges unforeseen cracks
- Resistant to flexural fatigue
- Hydrolysis resistant - resistant to standing water
- Based on highly advanced PMMA technology
- Quick and easy to apply
- Compatible with a wide range of substrates
- Suitable for all common walkway, balcony and terrace constructions
- Fire resistant:
 - Waterproofing layer:
 - German Standard Test method 1/prENV 1187; Classification B roof (t1) prEN 13501-5
 - Nordic Standard Nordtest NT Fire Test method 2/prENV 1187; Classification B roof (t2) prEN 13501-5
- French AFNOR Standard Test method 3/prENV 1187; Classification B roof (t3) prEN 13501-5
- Fully bonded with excellent inter layer adhesion
- Chemical resistant
- Resistant to Chloride and Carbon Dioxide ingress
- Vapour permeable
- Low temperature curing - 0°c
- UV resistant
- Solvent free
- Isocyanate free
- Halogen free
- Tailored design options
- 10 year materials warranty as standard
- Optional extended warranties available

System Build Up



- S Substrate
- 1 Triflex Primer
- 2 Triflex ProTerra® ETA certified Reinforced Waterproofing Layer
- 3 Triflex ProTerra® Wearing Layer
- 4 Triflex Finish

System Details

Triflex Primer - Primer for sealing of substrate and to improve adhesion.

Triflex ProTect® Reinforced Waterproofing Layer - Waterproofing layer fully reinforced with a tough polyester fabric.

Triflex ProTerra® Wearing Layer - Incorporating a hard wearing crystal quartz, coloured quartz or basalt aggregate.

Triflex Finish - Abrasion resistant system seal coat.

Applications

The system is suitable for the waterproofing and surfacing of walkways, balconies and terraces over occupied premises.

Triflex BTS-T

System Data Sheet

Substrate preparation and priming

Substrate	Preparation Notes	Priming	
		Triflex BTS-T main area	Triflex ProDetail® for details
Asphalt	1	Triflex Cryl Primer 222	Triflex Cryl Primer 222
Hot Rolled Asphalt (HRA)	1 / 8	Triflex Cryl Primer 222	Triflex Cryl Primer 222
Stone Mastic Asphalt (SMA)	1 / 8	Triflex Cryl Primer 222	Triflex Cryl Primer 222
Felt	2	N/A details only	No primer required
SBS Felt	2	N/A details only	No primer required
APP Felt	3	N/A details only	No primer required
Concrete / Screed	1 / 6	Triflex Cryl Primer 276	Triflex Cryl Primer 276
Lightweight concrete	1 / 6	Triflex Cryl Primer 276	Triflex Cryl Primer 276
Polymer modified concrete repair materials	1 / 6	Triflex Cryl Primer 276	Triflex Cryl Primer 276
Steel	4	No primer required	No primer required
Galvanised steel	4	No primer required	No primer required
Stainless steel	4	N/A details only	No primer required
Aluminium	4	N/A details only	No primer required
Copper	4	N/A details only	No primer required
Zinc	4	N/A details only	No primer required
Lead	4	N/A details only	No primer required
Glass	4	N/A details only	No primer required
Timber	2 / 9	Triflex Cryl Primer 276	Triflex Cryl Primer 276
Plastics (sheets, coatings, mouldings)			
CPE	4	N/A details only	No primer required
EVA	2	N/A details only	No primer required
PIB	2	N/A details only	No primer required
PVC-P, nB	4	N/A details only	No primer required
UPVC	4	N/A details only	No primer required
GRP	4	N/A details only	No primer required
PU (polyurethane)	5 / 7	No primer required	No primer required
PMMA (acrylic)	5 / 7	No primer required	No primer required
UP (polyester)	5 / 7	No primer required	No primer required
EP (epoxy)	5 / 7	No primer required	No primer required

For other substrates, consult Triflex (UK) Limited for required preparation methods and priming.

Notes:

- 1 = Scarify, grind or lightly bead blast
- 2 = Clean thoroughly
- 3 = Liquefy surface by application of heat and immediately top with quartz
- 4 = Rub down thoroughly with Triflex Cleaners, and abrade / grind metals and hard plastics to achieve a roughened surface
(steel must be ground or blasted to bright metal – where all rust cannot be practically removed an approved active anti-corrosion primer may be used)
- 5 = Lightly abrade and carry out an adhesion test
- 6 = The equilibrium moisture content of cementitious materials must not exceed 6% or 75% RH. Where moisture levels are in excess of these values refer to Triflex Pox R103
- 7 = Subject to testing of insitu material and approval by Triflex (UK) Limited
- 8 = For HRA and SMA, increase primer consumption by 50% and use maximum practical catalyst (minimum 6%)
- 9 = For domestic applications only and subject to structural suitability - see Substrate Assessment section

Where there are any doubts as to adhesion, carry out an adhesion test.

Triflex BTS-T

System Data Sheet

Fast curing, thick layer, waterproofing and surfacing system for walkways, balconies and terraces over occupied premises - ETA certified fully reinforced waterproofing membrane

Substrate Assessment

In all cases the condition and stability of the underlying substrate should be assessed prior to the commencement of work. See Substrate Testing section. Concrete structures should be designed in accordance with BS8110/CP110. Timber decks (domestic applications only) - Deck must be constructed from minimum 19mm marine ply, with joists at maximum 400mm centres. Deck to be mechanically fixed with countersunk fixings at 100mm centres along all joists and noggins, with all joints between boards filled with PVA adhesive to create a homogenous, rigid deck.

Substrate Preparation

Refer to substrate preparation and priming schedule.

Generally:

Remove existing paint and finishes etc. by grinding.

Ensure that the prepared surface is clean, dry and free from dust, laitence, grease, oil and any other contaminants.

Priming

Refer to substrate preparation and priming schedule.

Triflex Cryl Primer 222:

Apply with a lambswool roller (0.4kg/m² min.)

Rainproof after approx. 30 minutes.

Can be walked upon/next coat applied after approx. 45 minutes.

Triflex Cryl Primer 276:

Apply with a lambswool roller (0.4kg/m² min.)

Rainproof after approx. 30 minutes.

Can be walked upon/next coat applied after approx. 45 minutes.

Note: For new cementitious materials where it is not practical to allow the substrate to hydrate to below 6% equilibrium moisture content and 75% RH, or for existing cementitious substrates with higher levels of moisture, Triflex Pox R103 can be used where the equilibrium moisture content is less than 10%.

Triflex Pox R103:

Apply with a lambswool roller (0.5kg/m² min.)

Can be walked on after approx. 8 hours.

Next coat applied after approx. 18 hours.

Able to withstand stress after approx. 24 hours.

Surface Repairs and Filling

Cut out blisters and repair all minor indentations with scratch coat of Triflex Cryl RS 233 or Triflex Cryl Paste. Allow to dry for a minimum of 1 hour.

Fill all voids in vertical surfaces and at upstand transitions with Triflex Cryl Paste and allow to dry for a minimum of 1 hour.

Larger indentations can be filled with Triflex Cryl RS 240 (cementitious substrates), Triflex Cryl Mortar or Triflex Cryl Paste Mortar (non-cementitious substrates).

Joints between boards (timber decks only)

Apply an even layer of Triflex ProTerra® (2.0 kg/m² min.) with a lambswool roller directly over the joints.

Roll a minimum 200mm wide strip of Triflex 110g Reinforcement into the wet resin, pressing trapped air free using the lambswool roller, ensuring a minimum 50mm overlap between the reinforcement sheets.

Apply Triflex ProTerra® (1.0 kg/m² min.) wet on wet to ensure full saturation of the fleece.

Rainproof after approx. 30 minutes.

Can be walked upon/next coat applied after approx. 45 minutes.

Interface Details

Apply in accordance with standard and project specific sketch details.

General Details:

Apply Triflex ProDetail® (2.0 kg/m² min.) with a lambswool roller.

Roll a strip of Triflex 110g Reinforcement into the wet resin, pressing trapped air free using the lambswool roller, ensuring a minimum 50mm overlap between the reinforcement sheets.

Apply Triflex ProDetail® (1.0 kg/m² min.) wet on wet to ensure full saturation of the fleece.

Rainproof after approx. 30 minutes.

Can be walked on/next coat applied after approx. 45 minutes.

Complex Details:

Where due to access restrictions, or complexity of the detail, Triflex ProDetail® is not practical:

Apply Triflex Cryl R 295 fibre reinforced resin (1.5 kg/m² min.) with a brush and allow to cure for a minimum of 45 minutes.

Apply a further layer of Triflex Cryl R 295 fibre reinforced resin (1.5 kg/m² min.) by brush.

Rainproof after approx. 30 minutes.

Can be walked upon/next coat applied after approx. 45 minutes.

Note: Where details may be subject to mechanical damage, consult Triflex (UK) Limited for mechanical protection solutions.

Main Area

Reinforced Waterproofing Layer:

Apply an even layer of Triflex ProTerra® (2.0 kg/m² min.) with a lambswool roller.

Roll Triflex 110g Reinforcement into the wet resin, pressing trapped air free using the lambswool roller, ensuring a minimum 50mm overlap between the reinforcement sheets.

Apply Triflex ProTerra® (1.0 kg/m² min.) wet on wet to ensure full saturation of the fleece.

Rainproof after approx. 30 minutes.

Can be walked upon/next coat applied after approx. 45 minutes.

Fleece lap levelling:

Apply scratch levelling coat of Triflex Cryl Paste over laps in fleece. Allow to dry for a minimum of 1 hour.

Triflex BTS-T

System Data Sheet

Fast curing, thick layer, waterproofing and surfacing system for walkways, balconies and terraces over occupied premises - ETA certified fully reinforced waterproofing membrane

Wearing Layer:

Apply Triflex ProTerra® (1.5kg/m² min.) with a lambswool roller.

Embed into the liquid layer a full cover of crystal quartz (0.7-1.2mm), coloured quartz (0.7 - 1.2mm) or basalt (1.0-1.6mm) (7.0kg/m²) approx. Allow to dry for a minimum of 1 hour, sweep away excess aggregate and vacuum clean.

Rainproof after approx. 30 minutes.

Can be walked upon after approx. 45 minutes.

Next coat applied after approx. 2 hours.

Finish

Interface Details

Apply Triflex Cryl Finish 205 (0.5kg/m²min) using a lambswool roller.

Rainproof after approx. 30 minutes.

Can be walked upon after approx. 1 hour.

Note: For interface details in excess of 250mm high, use Triflex Cryl Finish 205 Thixo.

Main Area

Crystal quartz / basalt systems (pigmented seal) - Apply Triflex Cryl Finish 205 (0.65kg/m² min.), (0.80kg/m² min.) if over basalt) using a lambswool roller and remove excess material / level with a dry lambswool roller.

Coloured quartz systems (clear seal) - Apply Triflex Cryl Finish 202 (0.65kg/m² min.) using a lambswool roller and remove excess material / level with a dry lambswool roller.

Rainproof after approx. 30 minutes.

Can be walked upon after approx. 1 hour.

Can be subjected to loads after approx. 3 hours.

Expansion Joints

Consult Triflex (UK) Limited for confirmation of design details required.

Interruptions During Works

If work is interrupted for more than 12 hours, use Triflex Cleaner to clean and reactivate the transition area.

Evaporation time: at least 20 minutes - overlay within 60 minutes.

For reinforced details, the subsequent waterproofing layers must overlap by at least 100 mm, including the Reinforcement.

System Components

Please refer to the appropriate Product Data Sheet for details about areas of application/application conditions/mixing instructions (available on request):

Triflex Cryl Primer 222

Triflex Cryl Primer 276

Triflex Pox R103

Triflex Cryl Paste

Triflex Cryl RS 233

Triflex Cryl RS 240

Triflex Cryl Mortar

Triflex Cryl Paste Mortar

Triflex 110g Reinforcement

Triflex ProDetail®

Triflex Cryl R 295

Triflex ProTerra®

Triflex Cryl Finish 205

Triflex Cryl Finish 202

Quality Standard

All products are manufactured to ISO 9001.

Substrate Testing

Prior to the commencement of work the Contractor must check and only proceed if he has satisfied the following requirements.

Dimensional stability: All factors which may affect the subsequent performance of the system e.g. failed structural elements etc. must be repaired.

Hardness: All concrete substrates, concrete repair materials, screeds and mortars shall be cured and allowed to achieve a minimum hardness of 25N/mm².

Moisture: Prior to overlay with Triflex systems, the equilibrium moisture content of the substrate must not exceed 6% and 75% RH. For cementitious substrates with higher levels of moisture (less than 10% equilibrium) refer to Triflex Pox R103.

Adhesion: Trial areas to be prepared to ensure that the System achieves a minimum bond to the substrate of:

Concrete, concrete repair materials, screeds and mortars: 1.5N/mm²

All other substrates: 0.8N/mm²

Health and Safety

Refer to product Health and Safety data prior to using the materials.

Coverage Rates

The coverage rates given are guidelines based on smooth, level substrates. Allowances must be made if the substrate is uneven, rough or porous.

Drying Times

The drying times stated are at +20°C and are dependent upon weather conditions.

Important Notes

It is the Contractors' responsibility to ensure that the substrate is suitable and that the system is applied in all areas in accordance with Technical Data Sheets, Application Guidelines and ETA certificate in force at the time.

The advice we can provide on the application of our products is based on extensive development work as well as many years of experience and is given to the best of our knowledge. However, the wide variety of requirements for a building under the most diverse conditions mean that it is necessary for the Contractor to test the product for suitability in any given case. We reserve the right to make alterations in keeping with technical developments or improvements.

Triflex BTS-T

Model specification

Fast curing, thick layer, waterproofing and surfacing system for walkways, balconies and terraces over occupied premises - ETA certified fully reinforced waterproofing membrane

J31 Liquid Applied Waterproof Roof Coatings

To be read with Preliminaries / General Conditions.

Liquid Applied Waterproof Roof Coating Reference

Triflex BTS-T

Manufacturer:

Triflex (UK) Limited

Whitebridge Way

Stone

Staffordshire

ST15 8GH

Tel: +44 (0) 1785 819119

Fax: +44 (0) 1785 819960

E-mail: info@triflex.co.uk

Web: www.triflex.co.uk

Generally

Apply Triflex BTS-T system fully in accordance with Manufacturer's System Data Sheet (Appendix), standard Sketch Details (Appendix), and project specific Sketch Details (Appendix).

Substrate Assessment

Assess substrate in accordance with Triflex BTS-T System Data Sheet.

Substrate Preparation

Prepare substrate in accordance with Triflex BTS-T System Data Sheet.

Priming

Apply Triflex primer in accordance with Triflex BTS-T System Data Sheet.

Primer reference: Triflex Cryl Primer 222 / Triflex Cryl Primer 276 / Triflex Pox R103.

Surface Repairs and Filling

Repair and fill surface in accordance with Triflex BTS-T System Data Sheet.

Filling reference: Triflex Cryl RS233 / Triflex Cryl Paste / Triflex Cryl RS240 / Triflex Cryl Mortar / Triflex Cryl Paste Mortar.

Joints between boards (timber decks only)

(delete as applicable)

Treat joints between boards on timber decks in accordance with Triflex BTS-T System Data Sheet.

Overbanding reference: Triflex ProTerra® with 110g Reinforcement.

Interface Details

Apply interface details in accordance with Triflex BTS-T System Data Sheet, standard Sketch Details and project specific Sketch Details.

General details reference: Triflex ProDetail® with 110g Reinforcement.

Complex details reference: Triflex Cryl R295.

Main Area

Reinforced waterproofing layer:

Apply waterproofing to main deck area in accordance with Triflex BTS-T System Data Sheet.

Waterproofing reference: Triflex ProTerra® with 110g Reinforcement.

Fleece lap levelling: Level laps in reinforced waterproofing layer in accordance with Triflex BTS-T System Data Sheet.

Levelling reference: Triflex Cryl Paste.

Wearing layer: Apply wearing course to main deck area in accordance with Triflex BTS-T System Data Sheet.

Wearing layer reference: Triflex ProTerra®.

Aggregate reference: crystal quartz / coloured quartz / basalt.

Coloured quartz colour mix reference: INSERT.

Finish

Apply finish in accordance with Triflex BTS-T System Data Sheet.

Finish reference: Triflex Cryl Finish 205 / Triflex Cryl Finish 202.

Finish colour references: INSERT.

Installation

The works shall be executed by a Triflex Approved Contracting Partner licensed to install Triflex walkway, balcony and terrace waterproofing, surfacing and protection systems.

Triflex BTS-T

Model specification

Fast curing, thick layer, waterproofing and surfacing system for walkways, balconies and terraces over occupied premises - ETA certified fully reinforced waterproofing membrane

Required System Properties

- Totally waterproof, thick layer system (>4mm Dry Film Thickness)
- Fully reinforced liquid applied materials
- ETA certified waterproofing membrane - no. 04/0019 (25 year durability statement)
- Available with the following finish options:
 - 0.7 - 1.2mm crystal quartz with pigmented seal
 - 0.7 - 1.2mm coloured quartz with clear seal
 - 1.0 - 1.6mm basalt with Traffic Grey pigmented seal
- Seamless - with no joints, seams or fixings
- Elastomeric and dynamic crack bridging
- Anti-skid
- Tough, highly impact and abrasion resistant
- Durable - resistant to static and dynamic loads
- Totally cold applied
- Exceptionally fast curing
- Bridges unforeseen cracks
- Resistant to flexural fatigue
- Hydrolysis resistant - resistant to standing water
- Based on highly advanced PMMA technology
- Quick and easy to apply
- Compatible with a wide range of substrates
- Suitable for all common walkway, balcony and terrace constructions
- Fire resistant:
 - Waterproofing layer:
 - German Standard
 - Test method 1/prENV 1187; Classification B roof (t1) prEN 13501-5
 - Nordic Standard Nordtest NT Fire
 - Test method 2/prENV 1187; Classification B roof (t2) prEN 13501-5
 - French AFNOR Standard
 - Test method 3/prENV 1187; Classification B roof (t3) prEN 13501-5
- Fully bonded with excellent inter layer adhesion
- Chemical resistant
- Resistant to Chloride and Carbon Dioxide ingress
- Vapour permeable
- Low temperature curing - 0°c
- UV resistant
- Solvent free
- Isocyanate free
- Halogen free
- Tailored design options
- 10 year materials warranty as standard
- Optional extended warranties available

General Notes

The Triflex BTS-T System Data Sheet, standard Sketch Details and project specific Sketch Details are to be read as an integral part of this specification.

The Triflex Approved Contracting Partner is to install all details to comply with the Triflex BTS-T standard Sketch Details, any project specific Sketch Details and Triflex project specific recommendations. Should any detail arise where the treatment is not clear, the Contractor must seek advice and approval from Triflex (UK) Limited prior to commencing the works.

It is the Contractor's responsibility to ensure that the substrate is suitable and that the system is applied in all areas in accordance with System Data Sheets, Application Guidelines and ETA certificate in force at the time.

Notes to Specifiers

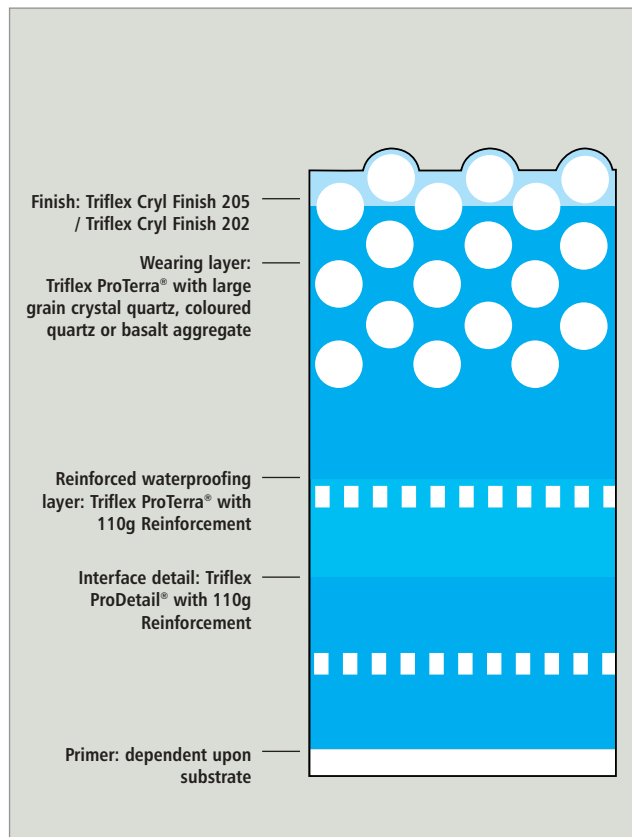
We recommend that for all walkway, balcony and terrace projects, the actual specification clauses for the Triflex waterproofing, surfacing and protection systems are prepared by the Triflex Technical Team.

This information can then be provided in a text format for insertion into Word and other documents.

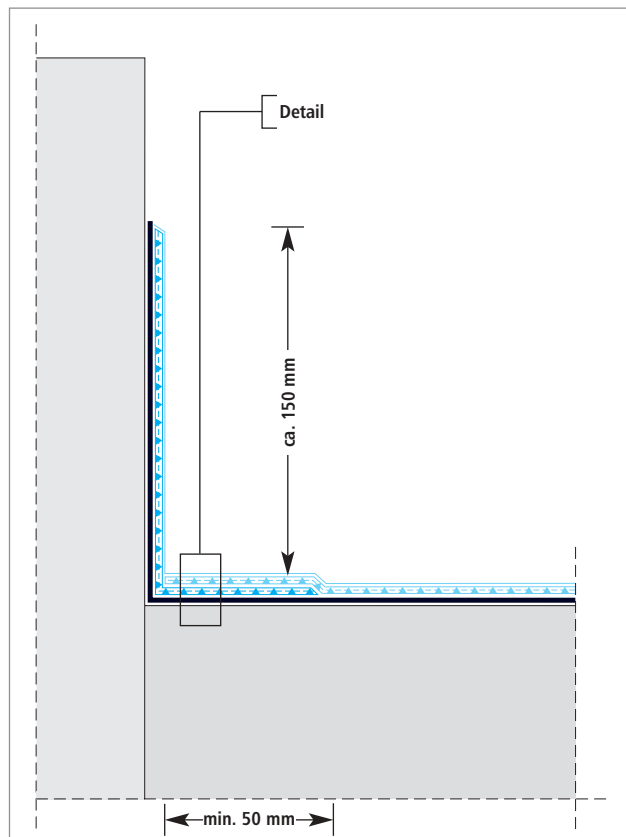
Triflex BTS-T

Sketch Details

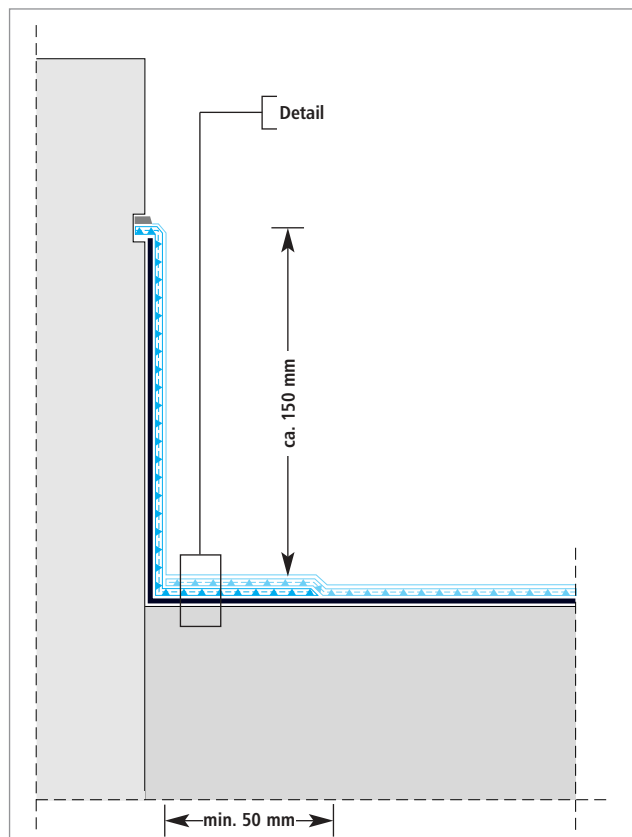
Detail interface



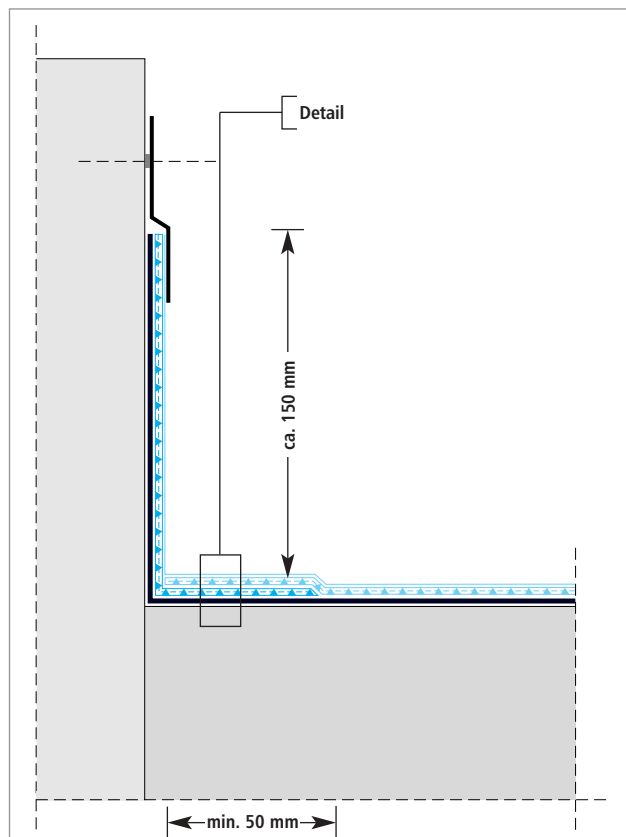
Upstand



Upstand with chase



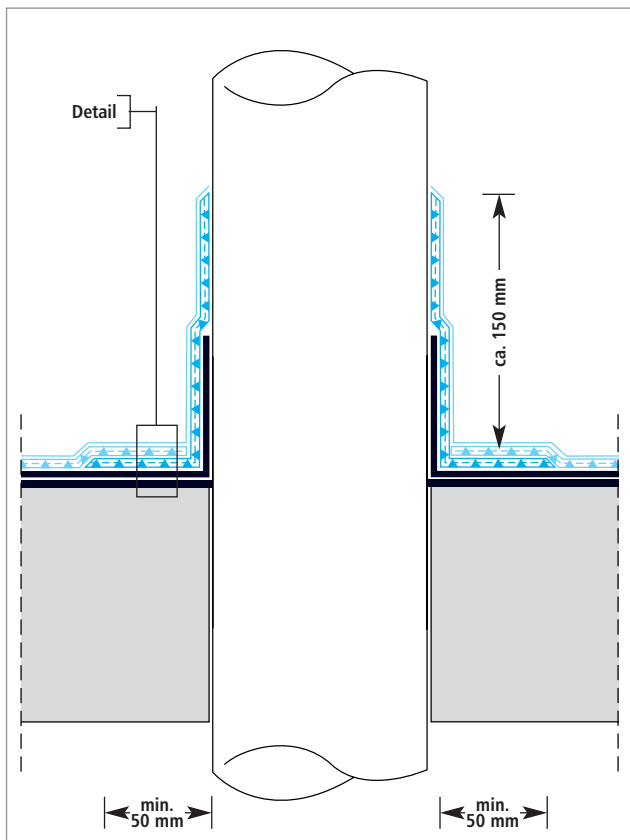
Upstand with cover flashing



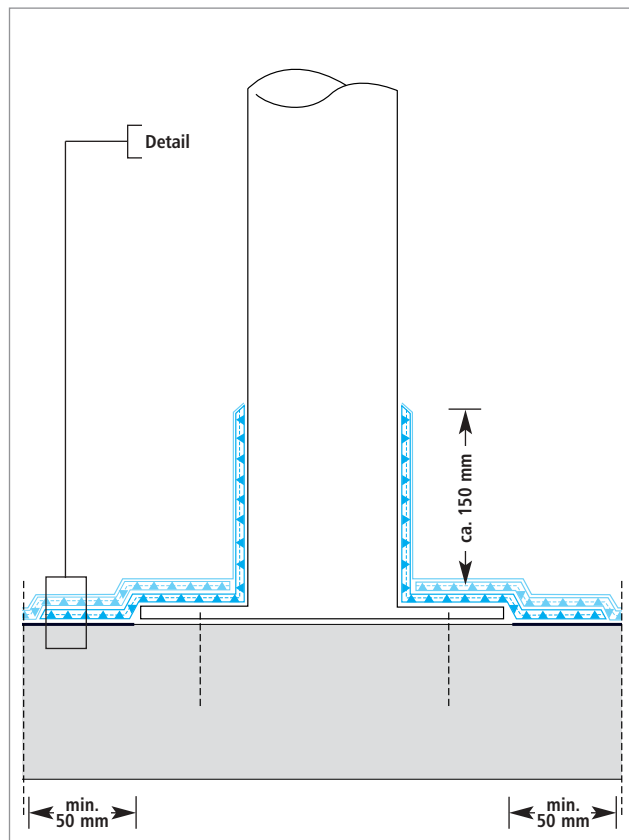
Triflex BTS-T

Sketch Details

Deck penetration



Surface mounted detail



Gully

