



Triflex BAS

- 02 Triflex BAS
- 03 System Build Up and Finish Options
- 04 System Benefits
- 05 System Data Sheet
- 09 Model Specification

Triflex BAS

Fast curing, anti-skid, decorative coating system for walkways, balconies and terraces

In certain circumstances, the main requirement may be to provide aesthetic enhancement with a safe anti-skid surface, rather than ultimate structural protection.

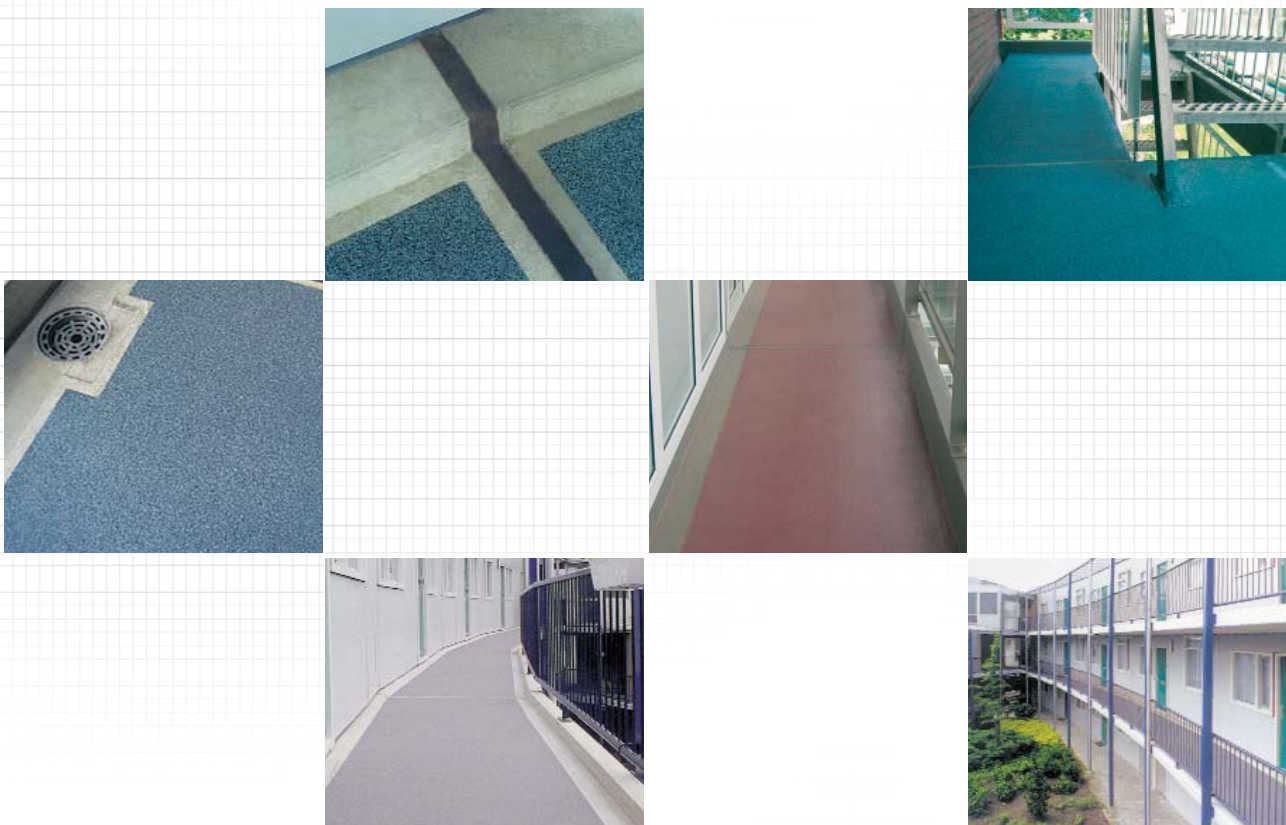
Where budget constraints preclude the use of the higher durability, thicker layer Triflex BFS system, the Triflex BAS may be an option. The system is typically used on high quality pre-cast concrete units which may become slippery when wet, or for covered applications where ingress control rather than full waterproofing is required.



System information:

System Build Up and Finish Options	System Benefits	System Data Sheet	Model Specification
Details of the build up of the system and the available finish options	Details of - system, environmental and quality benefits	Details of - system properties, build up, substrate compatibility, and application	Triflex BAS
Page 3	Page 5	Pages 5-7	Page 8-9

For further information on how Triflex BAS can be used to solve your walkway, balcony and terrace surfacing problems, please contact the Triflex Technical Team on 01785 819119.

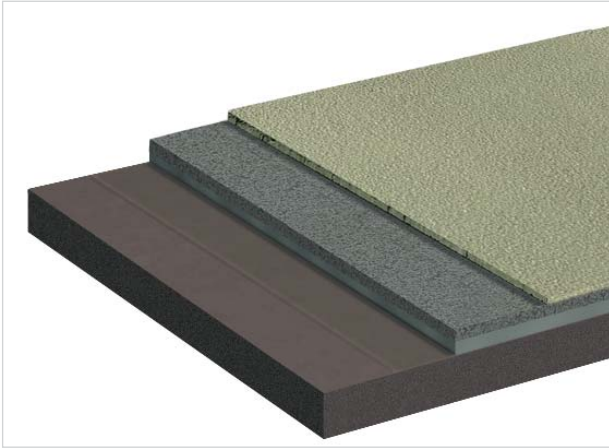


Triflex BAS System Build Up and Finish Options

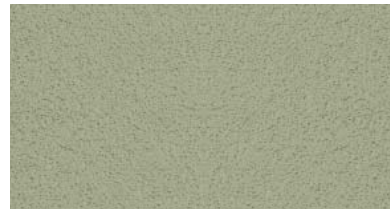
Fast curing, anti-skid, decorative coating system for walkways, balconies and terraces

System Build Up and Finish Options

Build Up



Finish Options

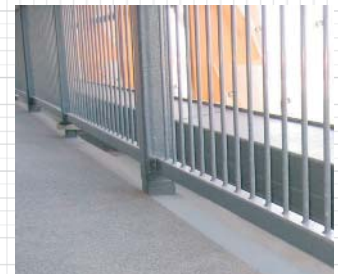


Small Grain Crystal
Quartz with
Pigmented Seal



Small Grain
Coloured Quartz
with Clear Seal

Note: For the full colour selection please refer to pages 11 to 13.



Triflex BAS

System Benefits

Fast curing, anti-skid, decorative coating system for walkways, balconies and terraces

AESTHETIC ENHANCEMENT	<ul style="list-style-type: none"> ⌘ Available with a choice of either small grain crystal quartz with a pigmented seal coat or small grain coloured quartz with a clear seal coat, the Triflex BAS system can be used to add colour and design to walkways, balconies and terraces ⌘ All Triflex resins are UV stable and use UV stable inorganic pigments meaning that colour is retained over time
ANTI-SKID	<ul style="list-style-type: none"> ⌘ Where skid resistance is an issue, the Triflex BAS system can reduce the potential for accidents and provides a defensible standard against claims ⌘ The system is particularly suited to smooth pre-cast and power floated concrete which can become slippery when wet
TOTALLY COLD APPLIED WITH EXCEPTIONALLY RAPID CURE TIMES	<ul style="list-style-type: none"> ⌘ All elements of the system are cold applied, avoiding the risks and insurance costs associated with hot works ⌘ Avoidance of hot works is becoming increasingly important as many clients and building insurers are specifying "100% cold" works for their properties ⌘ Adjacent flammable materials and / or structures require no further special protection during the installation of the system ⌘ Time on site for the contractor is minimised ⌘ Works on site can commence immediately with no waiting time for the heating of materials ⌘ The risk of injury to operatives from the use of hot materials is eliminated ⌘ With its exceptionally rapid cure times, areas are rapidly coated and time on site is reduced ⌘ Access restrictions are minimised as the system achieves full mechanical properties exceptionally quickly and all layers of the system can be trafficked relatively shortly after installation ⌘ With exceptionally short 'rain proof' times, weather windows can be maximised to ensure the highest levels of productivity ⌘ The contractor can leave site, confident that areas completed are totally secure
TOUGH AND DURABLE	<ul style="list-style-type: none"> ⌘ The Triflex BAS system is designed to be tough and durable, and is able to withstand normal pedestrian traffic ⌘ Unlike the more commonly available resins, Triflex resins achieve excellent inter layer adhesion, do not suffer inter layer delamination and have excellent resistance to the day to day forces imposed on walkway, balcony and terrace systems ⌘ The Triflex BBS system is resistant to both static and dynamic loads
LOW TEMPERATURE CURING	<ul style="list-style-type: none"> ⌘ Works can be carried out all year round and in the majority of climatic conditions, allowing the project to be completed when required, not when dictated by the temperature
FULLY BONDED WITH EXCELLENT INTER LAYER ADHESION	<ul style="list-style-type: none"> ⌘ Being fully bonded, underflow of water directly beneath the membrane is prevented ⌘ The inter layer adhesion of the system is generally greater than the cohesive strength of the substrate, virtually eliminating the risk of debonding or delamination
CHEMICAL RESISTANT	<ul style="list-style-type: none"> ⌘ The Triflex BAS system offers high levels of chemical resistance
SIMPLE MAINTENANCE	<ul style="list-style-type: none"> ⌘ Triflex walkway, balcony and terrace systems are designed to be low maintenance, minimising in service costs ⌘ The system can be simply cleaned - refer to 'Maintenance and Care' ⌘ Should additions need to be made, these can be incorporated quickly and easily

Environmental benefits

COMMITMENT TO THE ENVIRONMENT	<ul style="list-style-type: none"> ⌘ The Triflex Environmental Policy is certified under DIN ISO 14001 ⌘ The Triflex BAS system is solvent, isocyanate and halogen free, minimising its environmental impact
--------------------------------------	--

Quality benefits

QUALITY ASSURED MANUFACTURING	<ul style="list-style-type: none"> ⌘ As all materials are manufactured to ISO9001 quality assurance standards you can be assured of consistently high quality
QUALITY DESIGN, SPECIFICATION ASSISTANCE AND SUPPORT	<ul style="list-style-type: none"> ⌘ The Triflex Technical Team can assist in all areas of the design and specification process and provide ongoing support through to delivery of the project
QUALITY INSTALLATION	<ul style="list-style-type: none"> ⌘ Triflex walkway, balcony and terrace systems are only installed by our contracting partners who have been specially selected for their ability to provide the highest level of service to the client

Triflex BAS

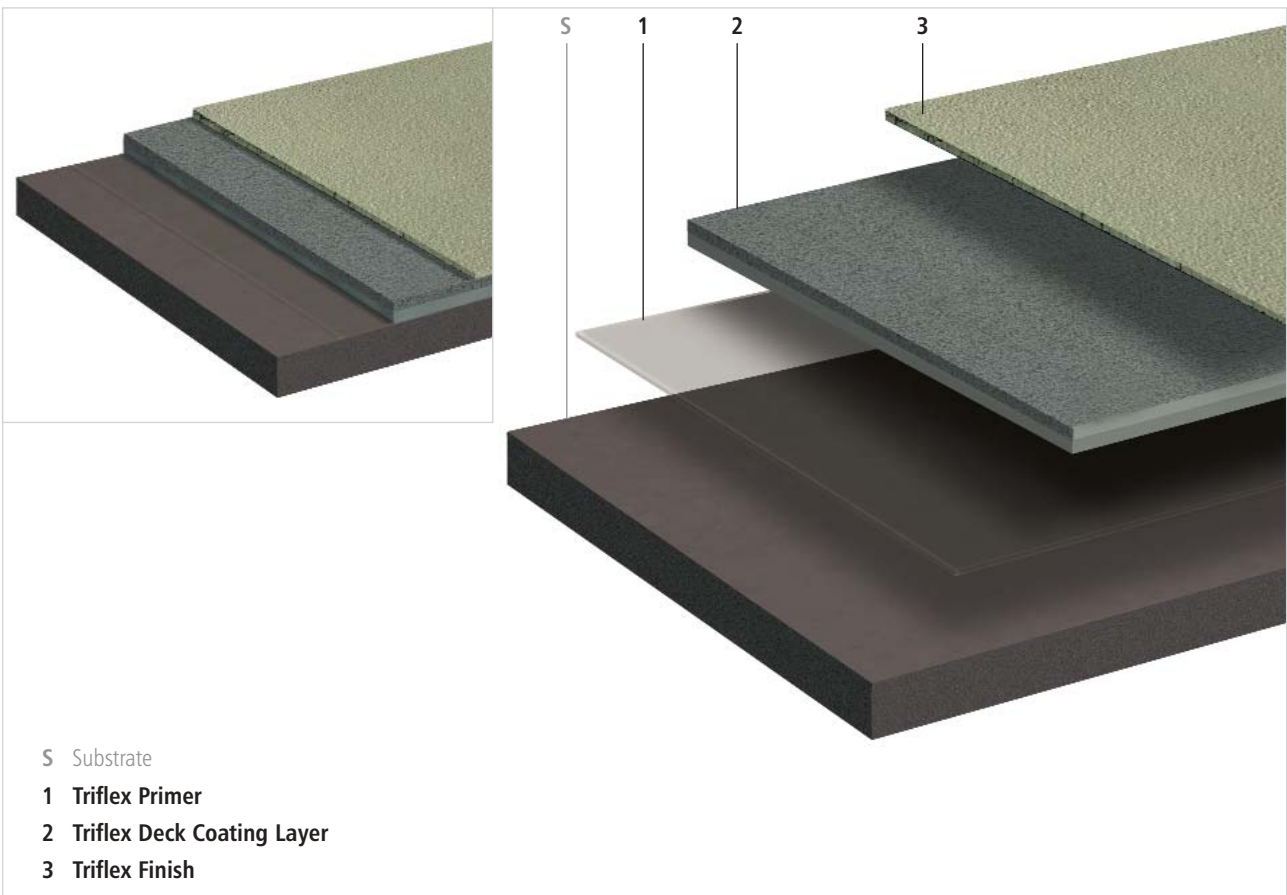
System Data Sheet

Fast curing, anti-skid, decorative coating system for walkways, balconies and terraces

Properties

- Anti-skid
- Water resistant
- Available with the following finish options:
 - 0.4 - 0.8mm crystal quartz with pigmented seal
 - 0.3 - 0.8mm coloured quartz with clear seal
- Seamless - with no joints, seams or fixings
- Impact and abrasion resistant
- Durable - resistant to static and dynamic loads
- Totally cold applied
- Exceptionally fast curing
- Quick and easy to apply
- Compatible with a wide range of substrates
- Fully bonded with excellent inter layer adhesion
- Chemical resistant
- Based on highly advanced PMMA technology
- Resistant to Chloride and Carbon Dioxide ingress
- Vapour permeable
- Low temperature curing - 0°c
- UV resistant
- Solvent free
- Isocyanate free
- Halogen free
- Tailored design options
- 10 year materials warranty as standard

System Build Up



System Details

Triflex Primer - Primer for sealing of substrate and to improve adhesion.

Triflex Deck Coating Layer - Water resistant, protective coating layer with small grain, hard wearing crystal quartz or coloured quartz aggregate.

Triflex Finish - Abrasion resistant system seal coat.

Applications

The system is suitable for the anti-skid, decorative coating of walkways, balconies and terraces which are not over occupied premises e.g. cantilevered structures. For full waterproofing of cantilevered structures refer to Triflex BFS.

Triflex BAS

System Data Sheet

Substrate preparation and priming

Substrate	Preparation Notes	Priming
		Triflex BAS main area
Asphalt	1	Triflex Cryl Primer 222
Concrete / Screed	1 / 2	Triflex Cryl Primer 276
Lightweight concrete	1 / 2	Triflex Cryl Primer 276
Polymer modified concrete repair materials	1 / 2	Triflex Cryl Primer 276

For other substrates, consult Triflex (UK) Limited for required preparation methods and priming.

Notes:

1 = Scarify, grind or lightly bead blast

2 = The equilibrium moisture content of cementitious substrates must not exceed 6% or 75% RH. Where moisture levels are in excess of 6% equilibrium moisture or 75% RH refer to Triflex Pox R103

Where there are any doubts as to adhesion, carry out an adhesion test.

Triflex BAS

System Data Sheet

Fast curing, anti-skid, decorative coating system for walkways, balconies and terraces

Substrate Assessment

In all cases the condition and stability of the underlying substrate should be assessed prior to the commencement of work. See Substrate Testing section. Concrete structures should be designed in accordance with BS8110/CP110.

Substrate Preparation

Refer to substrate preparation and priming schedule.

Generally:

Remove existing paint and finishes etc. by grinding.

Ensure that the prepared surface is clean, dry and free from dust, laitance, grease, oil and any other contaminants.

Priming

Refer to substrate preparation and priming schedule.

Triflex Cryl Primer 222:

Apply with a lambswool roller (0.4kg/m² min.)

Rainproof after approx. 30 minutes.

Can be walked upon/next coat applied after approx. 45 minutes.

Triflex Cryl Primer 276:

Apply with a lambswool roller (0.4kg/m² min.)

Rainproof after approx. 30 minutes.

Can be walked upon/next coat applied after approx. 45 minutes.

Note: For new cementitious materials where it is not practical to allow the substrate to hydrate to below 6% equilibrium moisture content and 75% RH, or for existing cementitious substrates with higher levels of moisture, Triflex Pox R103 can be used where the equilibrium moisture content is less than 10%.

Triflex Pox R103:

Apply with a lambswool roller (0.5kg/m² min.)

Can be walked on after approx. 8 hours.

Next coat applied after approx. 18 hours.

Able to withstand stress after approx. 24 hours.

Surface Repairs and Filling

Cut out blisters and repair all minor indentations with scratch coat of Triflex Cryl RS 233 or Triflex Cryl Paste. Allow to dry for a minimum of 1 hour.

Larger indentations can be filled with Triflex Cryl RS 240 (cementitious substrates), Triflex Cryl Mortar or Triflex Cryl Paste Mortar (non-cementitious substrates).

Main Area

Apply Triflex Cryl R210 (0.7kg/m² min.) using a lambswool roller.

Embed into the wet Triflex Cryl R210 a full cover of crystal quartz (0.4 - 0.8mm) or coloured quartz (0.3 - 0.8mm) (5.0kg/m²) approx.

Allow to dry for a minimum of 2 hours, sweep away excess aggregate and vacuum clean.

Rainproof after approx. 30 minutes.

Can be walked upon after approx. 1 hour.

Next coat applied after approx. 2 hours.

Finish

Crystal quartz systems (pigmented seal) - Apply Triflex Cryl Finish 205 (0.5kg/m² min.) using a lambswool roller and remove excess material / level with a dry lambswool roller.

Coloured quartz systems (clear seal) - Apply Triflex Cryl Finish 202 (0.5kg/m² min.) using a lambswool roller and remove excess material / level with a dry lambswool roller.

Rainproof after approx. 30 minutes.

Can be walked upon after approx. 1 hour.

Can be subjected to loads after approx. 3 hours.

Interruptions During Works

If work is interrupted for more than 12 hours, use Triflex Cleaner to clean and reactivate the transition area.

Evaporation time: at least 20 minutes - overlay within 60 minutes.

System Components

Please refer to the appropriate Product Data Sheet for details about areas of application/application conditions/mixing instructions (available on request):

Triflex Cryl Primer 222

Triflex Cryl Primer 276

Triflex Pox R103

Triflex Cryl Paste

Triflex Cryl RS233

Triflex Cryl RS 240

Triflex Cryl Mortar

Triflex Cryl Paste Mortar

Triflex Cryl R210

Triflex Cryl Finish 205

Triflex Cryl Finish 202

Quality Standard

All products are manufactured to ISO 9001.

Substrate Testing

Prior to the commencement of work the Contractor must check and only proceed if he has satisfied the following requirements.

Dimensional stability: All factors which may affect the subsequent performance of the system e.g. failed structural elements etc. must be repaired.

Hardness: All concrete substrates, concrete repair materials, screeds and mortars shall be cured and allowed to achieve a minimum hardness of 25N/mm².

Moisture: Prior to overlay with Triflex systems, the equilibrium moisture content of the substrate must not exceed 6% and 75% RH. For cementitious substrates with higher levels of moisture (less than 10% equilibrium) refer to Triflex Pox R103.

Adhesion: Trial areas to be prepared to ensure that the System achieves a minimum bond to the substrate of:

Concrete, concrete repair materials, screeds and mortars: 1.5N/mm²

All other substrates: 0.8N/mm²

Triflex BAS

System Data Sheet

Fast curing, anti-skid, decorative coating system for walkways, balconies and terraces

Health and Safety

Refer to product Health and Safety data prior to using the materials.

Coverage Rates

The coverage rates given are guidelines based on smooth, level substrates. Allowances must be made if the substrate is uneven, rough or porous.

Drying Times

The drying times stated are at +20°C and are dependent upon weather conditions.

Important Notes

It is the Contractors' responsibility to ensure that the substrate is suitable and that the system is applied in all areas in accordance with Technical Data Sheets and Application Guidelines in force at the time.

The advice we can provide on the application of our products is based on extensive development work as well as many years of experience and is given to the best of our knowledge. However, the wide variety of requirements for a building under the most diverse conditions mean that it is necessary for the Contractor to test the product for suitability in any given case. We reserve the right to make alterations in keeping with technical developments or improvements.

Triflex BAS

Model specification

Fast curing, anti-skid, decorative coating system for walkways, balconies and terraces

J31 Liquid Applied Waterproof Roof Coatings

To be read with Preliminaries / General Conditions.

Liquid Applied Waterproof Roof Coating Reference

Triflex BAS

Manufacturer:
Triflex (UK) Limited
Whitebridge Way
Stone
Staffordshire
ST15 8GH
Tel: +44 (0) 1785 819119
Fax: +44 (0) 1785 819960
E-mail: info@triflex.co.uk
Web: www.triflex.co.uk

Generally

Apply Triflex BAS system fully in accordance with Manufacturer's System Data Sheet (Appendix).

Substrate Assessment

Assess substrate in accordance with Triflex BAS System Data Sheet

Substrate Preparation

Prepare substrate in accordance with Triflex BAS System Data Sheet.

Priming

Apply Triflex primer in accordance with Triflex BAS System Data Sheet.

Primer reference: Triflex Cryl Primer 222 / Triflex Cryl Primer 276 / Triflex Pox R103.

Surface Repairs and Filling

Repair and fill surface in accordance with Triflex BAS System Data Sheet.

Filling reference: Triflex Cryl RS233 / Triflex Cryl Paste / Triflex Cryl RS240 / Triflex Cryl Mortar / Triflex Cryl Paste Mortar.

Main Area

Apply coating to main deck area in accordance with Triflex BAS System Data Sheet.

Coating reference: Triflex Cryl R210.

Aggregate reference: crystal quartz / coloured quartz.

Coloured quartz colour mix reference: INSERT.

Finish

Apply finish in accordance with Triflex BAS System Data Sheet.

Finish reference: Triflex Cryl Finish 205 / Triflex Cryl Finish 202.

Finish colour references: (INSERT).

Installation

The works shall be executed by a Triflex Approved Contracting Partner licensed to install Triflex walkway, balcony and terrace waterproofing, surfacing and protection systems.

Required System Properties

- Anti-skid
- Water resistant
- Available with the following finish options:
 - 0.4 - 0.8mm crystal quartz with pigmented seal
 - 0.3 - 0.8mm coloured quartz with clear seal
- Seamless - with no joints, seams or fixings
- Impact and abrasion resistant
- Durable - resistant to static and dynamic loads
- Totally cold applied
- Based on highly advanced PMMA technology
- Exceptionally fast curing
- Quick and easy to apply
- Compatible with a wide range of substrates
- Fully bonded with excellent inter layer adhesion
- Chemical resistant
- Resistant to Chloride and Carbon Dioxide ingress
- Vapour permeable
- Low temperature curing - 0° c
- UV resistant
- Solvent free
- Isocyanate free
- Halogen free
- Tailored design options
- 10 year materials warranty as standard

General Notes

The Triflex BAS System Data Sheet is to be read as an integral part of this specification.

It is the Contractor's responsibility to ensure that the substrate is suitable and that the system is applied in all areas in accordance with System Data Sheets and Application Guidelines in force at the time.

Notes to Specifiers

We recommend that for all walkway, balcony and terrace projects, the actual specification clauses for the Triflex waterproofing, surfacing and protection systems are prepared by the Triflex Technical Team.

This information can then be provided in a text format for insertion into Word and other documents.