

Intelligent Roof Protection

Roofs | Roof details | Roof repairs



**Cold liquid applied waterproofing systems for:
Roofs | Roof details | Roof repairs**

Triflex[®]

Intelligent Roof Protection

Roofs | Roof details | Roof repairs

The customer determines our business

As a renowned specialist with more than 30 years experience, we offer our customers the best service possible. We do not just sell products, we offer solutions to solve problems. Whether you are a roofing contractor, specifier, architect, property owner or main contractor - all Triflex clients receive the same level of technical service, support and back up right through to delivery of the project.

With Triflex, you can focus on the important things. We take care of the details.

Triflex versatile, cold applied roofing solutions

Triflex offer a range of sophisticated, cold liquid applied waterproofing systems to deal with all types of roofing projects, including:

- Roof refurbishment
- New build construction
- Roof details
- Roof repairs

With totally cold application, there's no need to gamble on hot works!

Liquid applied waterproofing, surfacing and coating systems

In addition to roofing, throughout Europe Triflex is recognised as the leader in providing waterproofing, surfacing and coating solutions for the following:

- Walkways, balconies and terraces
- Car parks
- Special projects
- Road and cycle path markings

For further information on these specialist areas, visit www.triflex.co.uk or contact us directly.



Intelligent Roof Protection

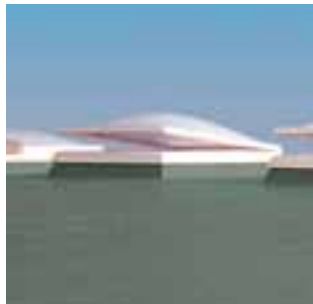
Roofs | Roof details | Roof repairs



Intelligent roof protection

A waterproofing system must adapt to the conditions on the roof, offer maximum design possibilities and perform without compromise. To put it simply, it must remain watertight.

By choosing Triflex cold liquid applied waterproofing systems, you are choosing a guaranteed, proven alternative with advantages over all conventional and sheet applied materials.



A commitment to quality and the environment

All Triflex products are manufactured under the international ISO 9001 Quality Management standard. In addition, our roofing systems have been subjected to the most demanding independent testing including:

- ETA – European Technical Approvals
- FM – Factory Mutual
- UL – Underwriters Laboratories
- FLL – Root resistance
- UK, European and US fire tests

As environmentally responsible manufacturers we manufacture under the international ISO 14001 Environmental Management standard.

For further details of our environmental policy and commitment please visit www.triflex.co.uk.

ISO 14001



Intelligent Roof Protection

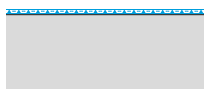
Roofs | Roof details | Roof repairs

Triflex roof waterproofing systems

Primary requirement	Main area waterproofing systems		Detail and repair waterproofing systems		
	Triflex ProTect®	Triflex ProTect® PUR	Triflex ProDetail®	Triflex ProDetail® PUR	Triflex Cryl R 295
Waterproofing of roofs	■	■			
Waterproofing of roofs in odour sensitive areas		■			
Waterproofing of roofs at low temperatures <5°C	■				
Waterproofing of general roof details and repairs			■	■	
Waterproofing of roof details and repairs in odour sensitive areas				■	
Waterproofing of highly complex and difficult to access roof details					■
Waterproofing of roof details and repairs at low temperatures <5°C			■		
European Technical Approval – ETA certified	■ 25 year durability	□	■ 25 year durability	□	
Warranty	■ 20 years	■ 20 years			

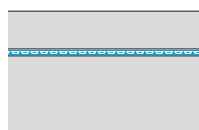
■ Suitable □ In progress

Roof build up possibilities



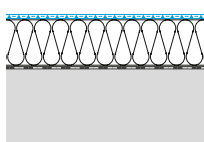
Uninsulated / overlay of existing membrane

Where the Triflex membrane is to be applied directly to the structural deck or to an existing membrane / system.



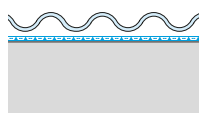
Buried membrane roof (cementitious)

Where the Triflex membrane is used to waterproof the substrate and subsequently overlaid with either a cementitious overlay or directly built on top of e.g. for waterproofing beneath walls.



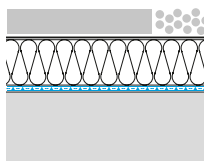
Warm roof

Where the insulation is adhered to the substrate and the Triflex membrane is the final waterproofing layer.



Submerged roof (water features, fountains, cascades and storage)

Where the Triflex membrane is used to waterproof the substrate and is to be permanently or semi-permanently submerged under water.



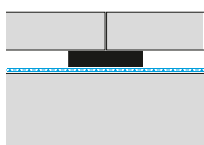
Inverted roof (ballast or paving)

Where the Triflex membrane is used to waterproof the substrate and is subsequently overlaid with insulation, ballasted with gravel or paving.



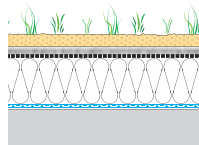
Heavily trafficked roof

Where the Triflex membrane is used to waterproof and surface the roof for other than general maintenance traffic e.g. pedestrianised roofs or heavily accessed industrial roofs.



Paved roof (plaza decks / podium roofs)

Where the Triflex membrane is used to waterproof the substrate and is subsequently overlaid with paving, either on a mortar bed or supports.



Extensive green roofs

A form of roof construction where the Triflex membrane is used as the waterproofing for green roofs, designed for lightweight vegetation using hydroseeding, plug planting, sedum mat or brown roofing.

Hybrid roofs

Although the above cover the majority of roof system build ups, Triflex systems are also suitable for hybrid roofs featuring a combination of the above.

Main area waterproofing systems

Triflex ProTect®

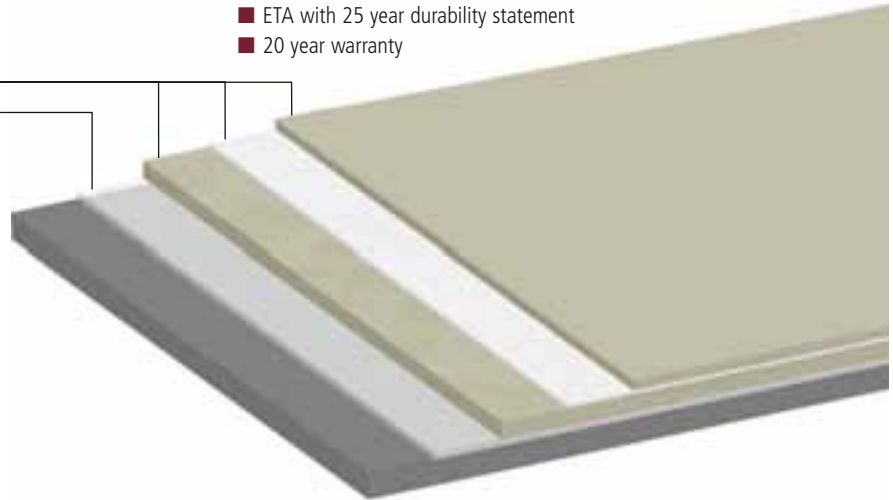
The Triflex ProTect® cold liquid applied, fully reinforced system was developed to offer maximum versatility in roof waterproofing. The unique system properties allow Triflex ProTect® to be used all year round to waterproof virtually all roof constructions, including zero pitch, with almost limitless build up possibilities. The system is suitable for both new roof construction and roof refurbishment where its' compatibility with almost all existing substrates becomes invaluable.

The system was the first in Europe to achieve European Technical Approval (ETA) certification and is a benchmark for the liquid applied industry.*

Primary system benefits:

- Unique fully reinforced, seamless cold liquid application
- Suitable for all common roof build ups
- Simple, low risk application
- Elastomeric, dynamic crack bridging with high tensile strength
- Exceptionally rapid cure times even at low temperatures (-5°C)
- Hydrolysis resistant (resistant to standing water)
- Compatible with the majority of substrates including single ply membranes
- Extremely weather resistant
- Traffic, impact and load resistant
- ETA with 25 year durability statement
- 20 year warranty

Waterproofing (single process)
Primer (if required)



Triflex ProTect PUR

The Triflex ProTect PUR cold liquid applied, fully reinforced roof waterproofing system is based on Triflex ProThan solvent free Polyurethane (PUR) resin.

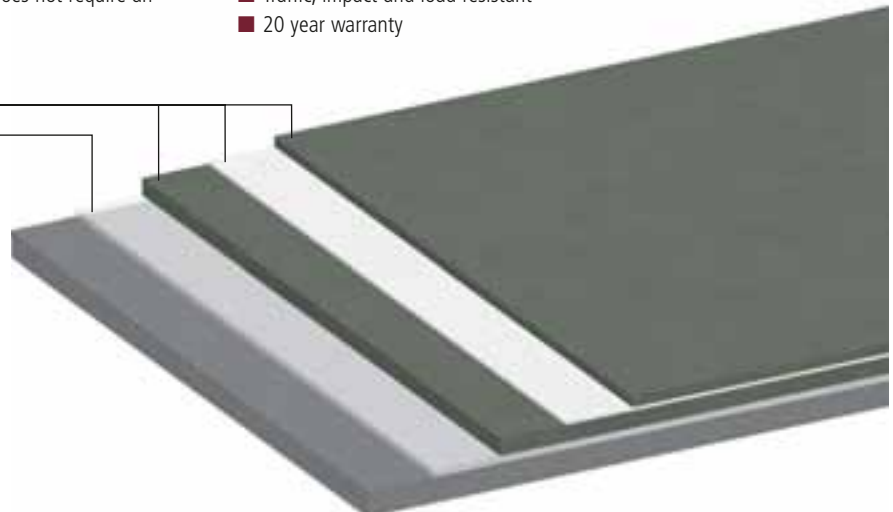
Using the same principles and reinforcement as the Triflex ProTect®, the system is designed for use in highly odour sensitive environments such as schools, hospitals, nurseries and buildings with very high public usage.

Triflex ProTect PUR is UV and weather resistant and does not require an additional protective coating.

Primary system benefits:

- Odourless
- Unique fully reinforced, seamless cold liquid application
- Suitable for most common roof build ups
- Elastomeric, dynamic crack bridging with high tensile strength
- Compatible with the majority of substrates including single ply membranes
- Highly weather resistant
- Traffic, impact and load resistant
- 20 year warranty

Waterproofing (single process)
Primer (if required)



Intelligent Roof Protection

Roofs | Roof details | Roof repairs

Detail and repair waterproofing systems

Triflex ProDetail®

The Triflex ProDetail® cold liquid applied, fully reinforced waterproofing system is the optimum solution for roof details and repairs. The system is compatible with virtually all materials and substrates likely to be encountered on the roof. With exceptionally rapid curing times and application at temperatures down to -5°C, Triflex ProDetail® offers an exceptionally practical, all year round solution.

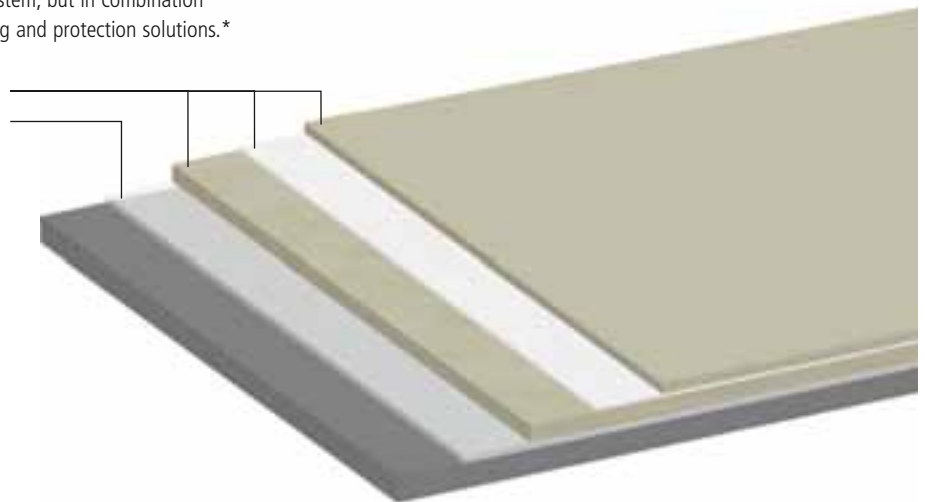
Triflex ProDetail® has a European Technical Approval (ETA) with a 25 year durability statement, confirming its' exceptional technical performance.

The system is not only proven as a stand alone system, but in combination with the majority of Triflex waterproofing, surfacing and protection solutions.*

Primary system benefits:

- Simple, low risk application
- Exceptionally rapid cure times
- Can be used at low temperatures (-5°C)
- Unique fully reinforced, seamless cold liquid application
- Elastomeric, dynamic crack bridging with high tensile strength
- Compatible with the majority of substrates including single ply membranes
- Extremely weather resistant
- Thixotropic formulation for vertical surfaces
- ETA with 25 year durability statement

Waterproofing (single process)
Primer (if required)



Triflex ProDetail PUR

The Triflex ProDetail PUR cold liquid applied, fully reinforced roof detail and repair system is based on Triflex ProThan Detail solvent free Polyurethane (PUR) resin.

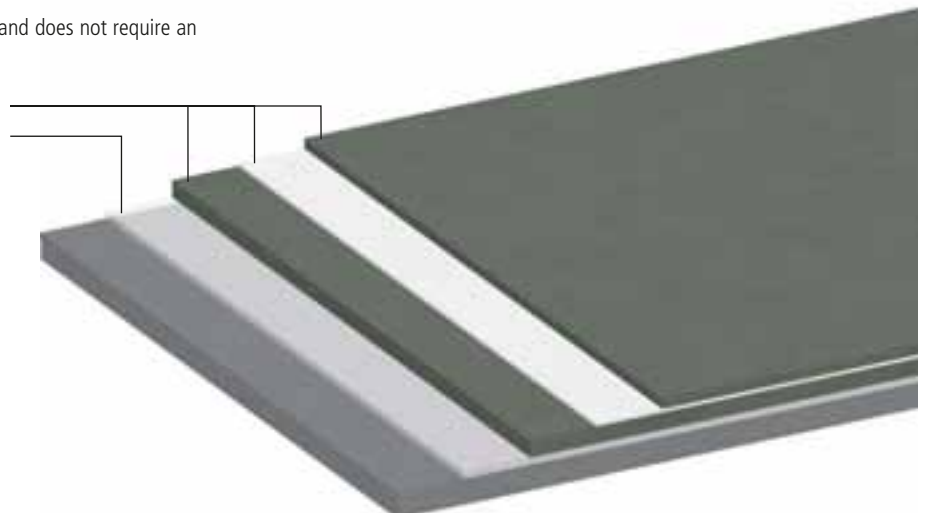
Using the same principles and reinforcement as the Triflex ProDetail®, the system is designed for use in highly odour sensitive environments such as schools, hospitals, nurseries and buildings with very high public usage.

Triflex ProDetail PUR is UV and weather resistant and does not require an additional protective coating.

Primary system benefits:

- Odourless
- Unique fully reinforced, seamless cold liquid application
- Elastomeric, dynamic crack bridging with high tensile strength
- Compatible with the majority of substrates including single ply membranes
- Highly weather resistant
- Thixotropic formulation for vertical surfaces

Waterproofing (single process)
Primer (if required)



Detail and repair waterproofing systems

Triflex Cryl R 295

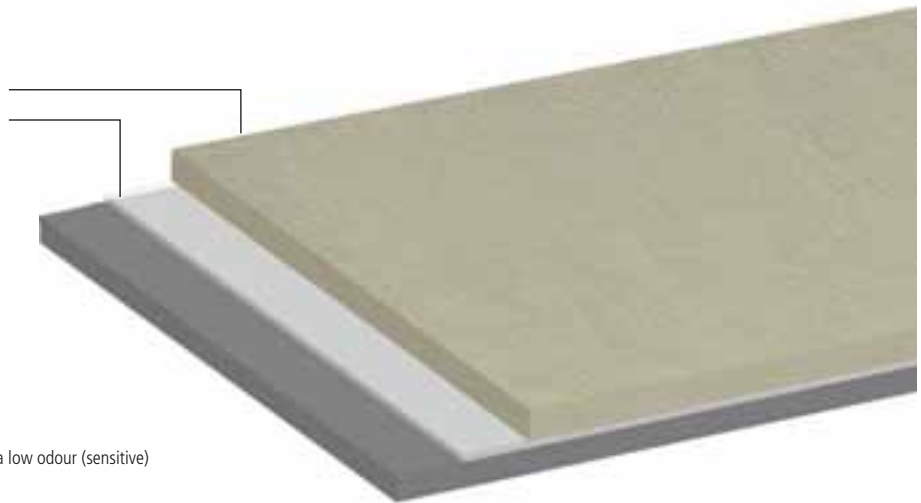
Triflex Cryl R 295 is based on similar technology to the Triflex ProDetail® yet using an inbuilt fibre reinforcement rather than a fabric reinforcement.

The system is designed for highly complex details which cannot be practically waterproofed using a fabric reinforcement, and for details where access is restricted.

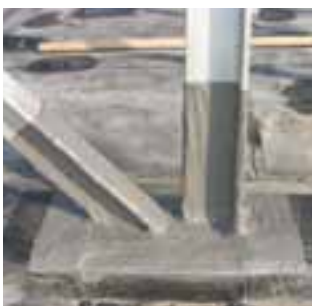
Primary system benefits:

- Very easy to apply by brush to allow use on highly complex and difficult to access details
- Fibre reinforced, cold application
- Exceptionally rapid cure times
- Can be used at low temperatures (-5°C)
- Elastomeric and dynamic crack bridging
- Compatible with the majority of substrates including single ply membranes
- Extremely weather resistant

Waterproofing
Primer (if required)



* Triflex ProTect® and Triflex ProDetail® are also available in a low odour (sensitive) variant for use in moderately sensitive environments.



Bespoke, project specific CAD details can be produced for all roofing projects



Triflex Intelligent Solutions



Colour and finish options

Triflex roof waterproofing systems are available in a standard range of grey shades. With our smooth and anti-skid finishes the roof can be matched to almost any colour, or using contrasting colours, maintenance or escape walkways, or other roof graphics can be formed.



Quality application

Triflex systems are applied by trained and experienced specialists. Our selection process is designed to guarantee the highest standard of workmanship and service for the client. If you would like to work with Triflex systems, please contact us directly.



Our goal is to make life that little bit easier for you.

For more detailed information on our systems please contact us at the following address or simply visit www.triflex.co.uk.

Triflex®

Triflex (UK) Limited
 Whitebridge Way | Stone | Staffordshire | ST15 8GH
 Tel. 01785 819119
 Fax 01785 819960
info@triflex.co.uk | www.triflex.co.uk
 A member of the Follmann Group

The next step

In order to assist our clients in the selection of the most suitable solutions for their roofing projects Triflex offer free:

- Site surveys
- Recommendations for the most suitable Triflex system
- Assistance with specification production
- Provision of sketch details and where required project specific CAD details
- U value calculations and condensation risk analysis
- On and off site adhesion tests
- On site support as required

