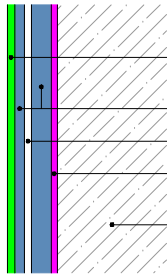
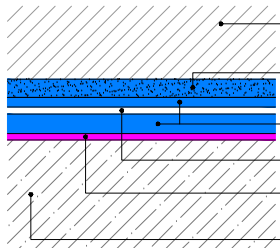


DETAIL PROTECTION

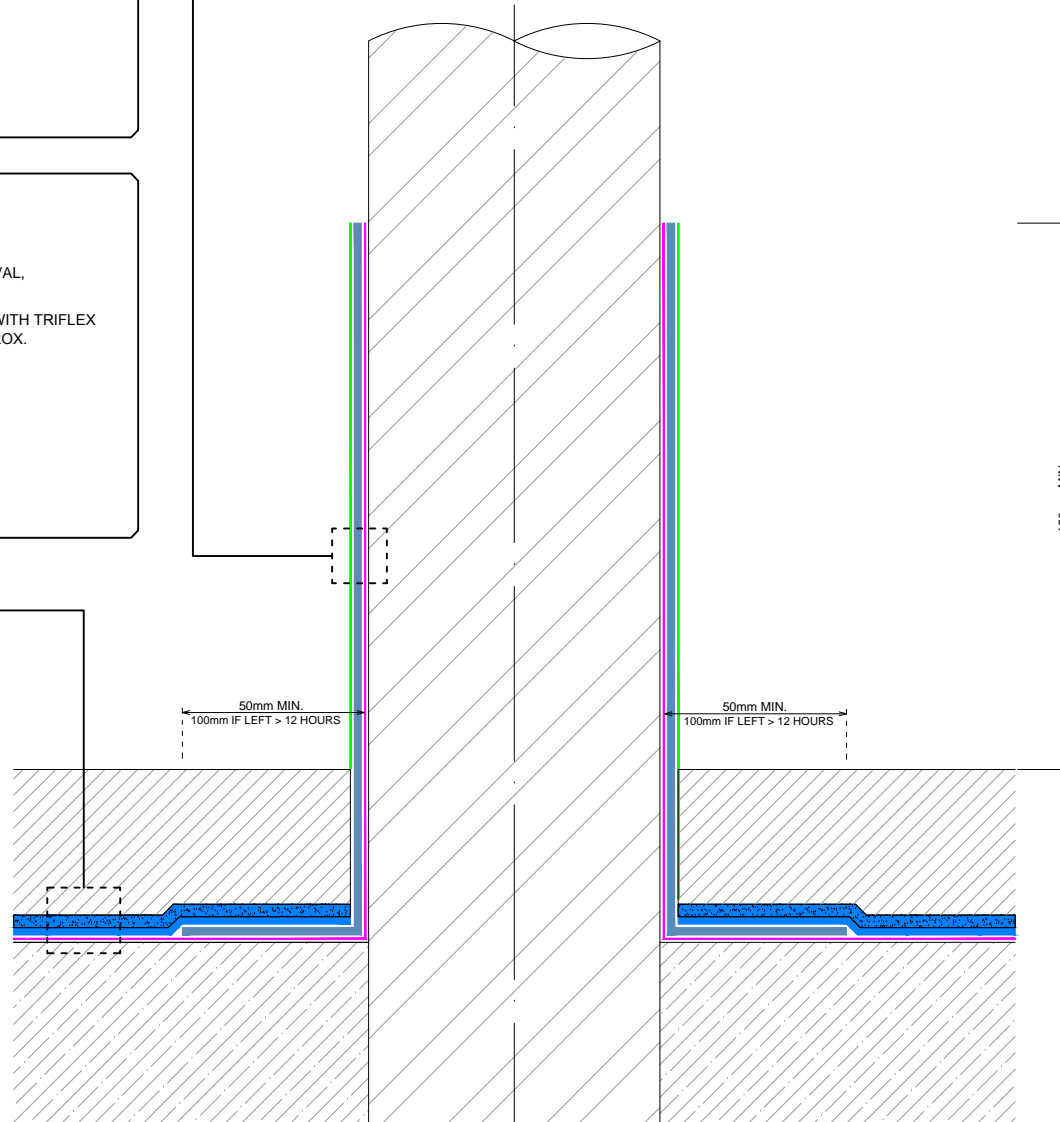


- TRIFLEX CRYL FINISH 209 (THIXO IF VERTICAL > 250mm) @ 0.50 Kg/m² MIN.
- TRIFLEX PRODETAIL® @ 3.00 Kg/m² MIN.
- TRIFLEX 110g REINFORCEMENT FLEECE
- TRIFLEX PRIMER (REFER TO PROJECT SPECIFICATION)
- GENERIC SUBSTRATE (PREPARED)

MAIN AREA WATERPROOFING



- ASPHALT SUBJECT TO TRIFLEX APPROVAL, MINIMUM 40MM THICK
- TRIFLEX PROPARK® @ 1.50 Kg/m² MIN. WITH TRIFLEX QUARTZ (0.7 - 1.2mm) @ 5.00 Kg/m² APPROX.
- TRIFLEX PROPARK® @ 3.00 Kg/m² MIN.
- TRIFLEX 110g REINFORCEMENT FLEECE
- TRIFLEX PRIMER (IF REQUIRED - REFER TO PROJECT SPECIFICATION)
- GENERIC SUBSTRATE (PREPARED)

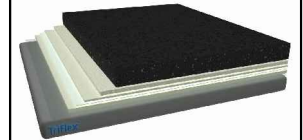


GENERAL NOTES

This drawing and any reference to structural / thermal elements should be treated as indicative only and read in conjunction with the Triflex PROJECT specification and relevant Triflex technical data. Details should be verified for accuracy and suitability as we specifically exclude any liability for errors, omissions or otherwise.

The drawing should not be reproduced or amended except with the written permission of Triflex. Do not scale, use figured dimensions only, and check all dimensions on site.

INDICATIVE SYSTEM BUILD-UP



SYSTEM

TRIFLEX AWS WITH QUARTZ
0.7 - 1.2mm

PROJECT

STANDARD

DETAIL

PENETRATION - FULL UPSTAND

DRAWING NUMBER

AWS_052_PENETRATION
- FULL UPSTAND

SCALE

NTS

DATE

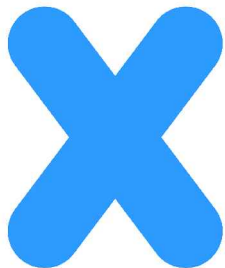
10/05/2017

Triflex

Delivering solutions together

Triflex (UK) Limited

Whitebridge Way | Stone | Staffs
ST15 8JS | Tel: 01785 819119
www.triflex.co.uk | info@triflex.co.uk



CAR PARK | MARKINGS | REPAIRS