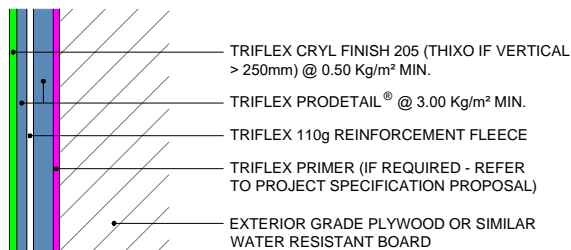
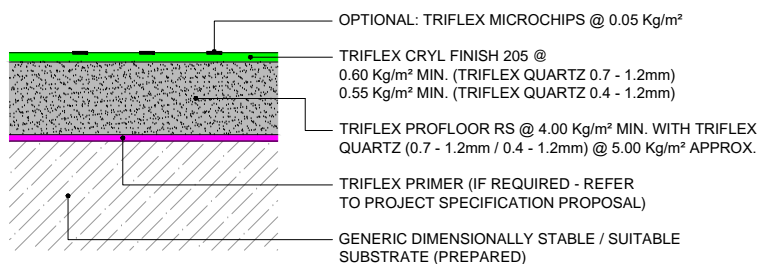


## DETAIL WATERPROOFING

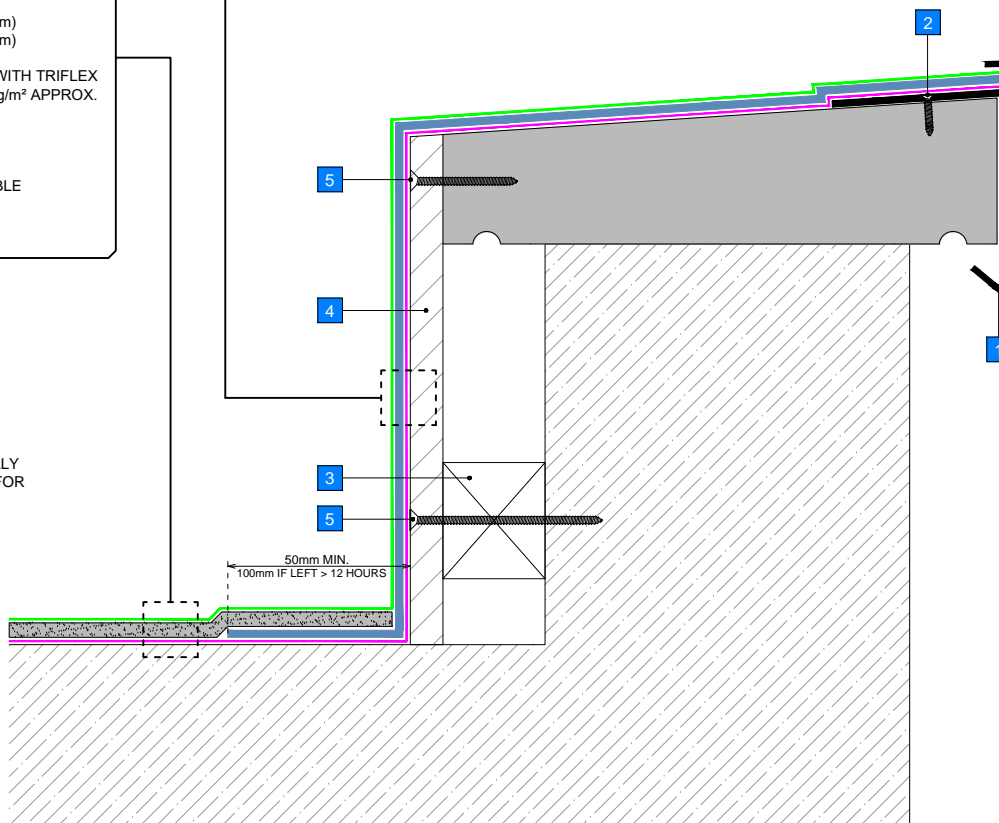


## MAIN AREA WATERPROOFING



## NOTES

- 1 EDGE PROFILE
- 2 MECHANICAL FIXING OR ADHERE WITH TRIFLEX CRYL PASTE
- 3 SUPPORT BATTEN
- 4 EXTERIOR GRADE PLYWOOD OR SIMILAR WATER RESISTANT BOARD MECHANICALLY FIXED TO UPSTAND AND COPING TO PROVIDE A SUITABLE / SECURE SUBSTRATE FOR TRIFLEX PRODETAIL®
- 5 COUNTERSUNK FIXINGS

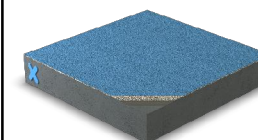


## GENERAL NOTES

This drawing and any reference to structural / thermal elements should be treated as indicative only and read in conjunction with the Triflex Project specification proposal and relevant Triflex technical data. Details should be verified for accuracy and suitability as we specifically exclude any liability for errors, omissions or otherwise.

The drawing should not be reproduced or amended except with the written permission of Triflex. Do not scale, use figured dimensions only, and check all dimensions on site.

## INDICATIVE SYSTEM BUILD-UP



## SYSTEM

TRIFLEX BFS COLOURSEAL - LARGE GRAIN QUARTZ

## PROJECT

STANDARD

## DETAIL

UPSTAND WITH COPING - ENCAPSULATED WITH BOXING AND EDGE PROFILE

## DRAWING NUMBER

BFS\_CS\_LGQ\_014\_UPSTAND WITH COPING-ENCAPSULATED WITH BOXING AND EDGE PROFILE

## SCALE

NTS

## DATE

14/08/2018

**Triflex**  
Delivering solutions together

Triflex (UK) Limited

Whitebridge Way | Stone | Staffs  
ST15 8JS | Tel: 01785 819119  
www.triflex.co.uk | info@triflex.co.uk



WALKWAYS | BALCONIES | TERRACES