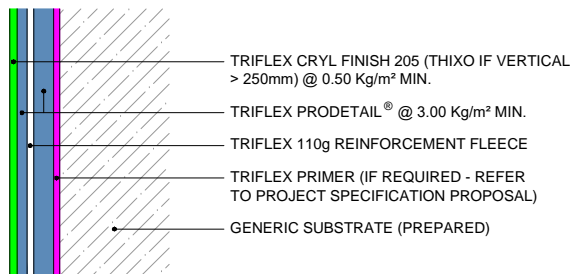
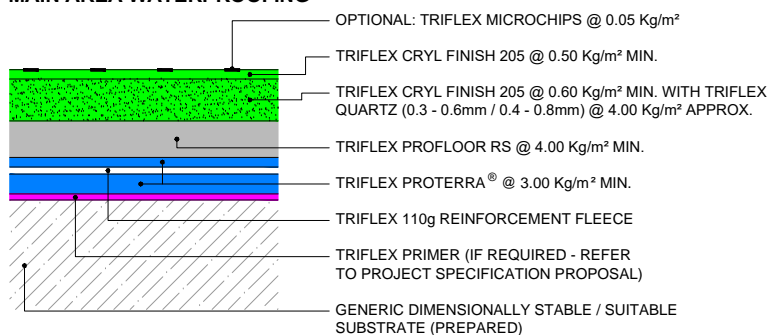


DETAIL WATERPROOFING

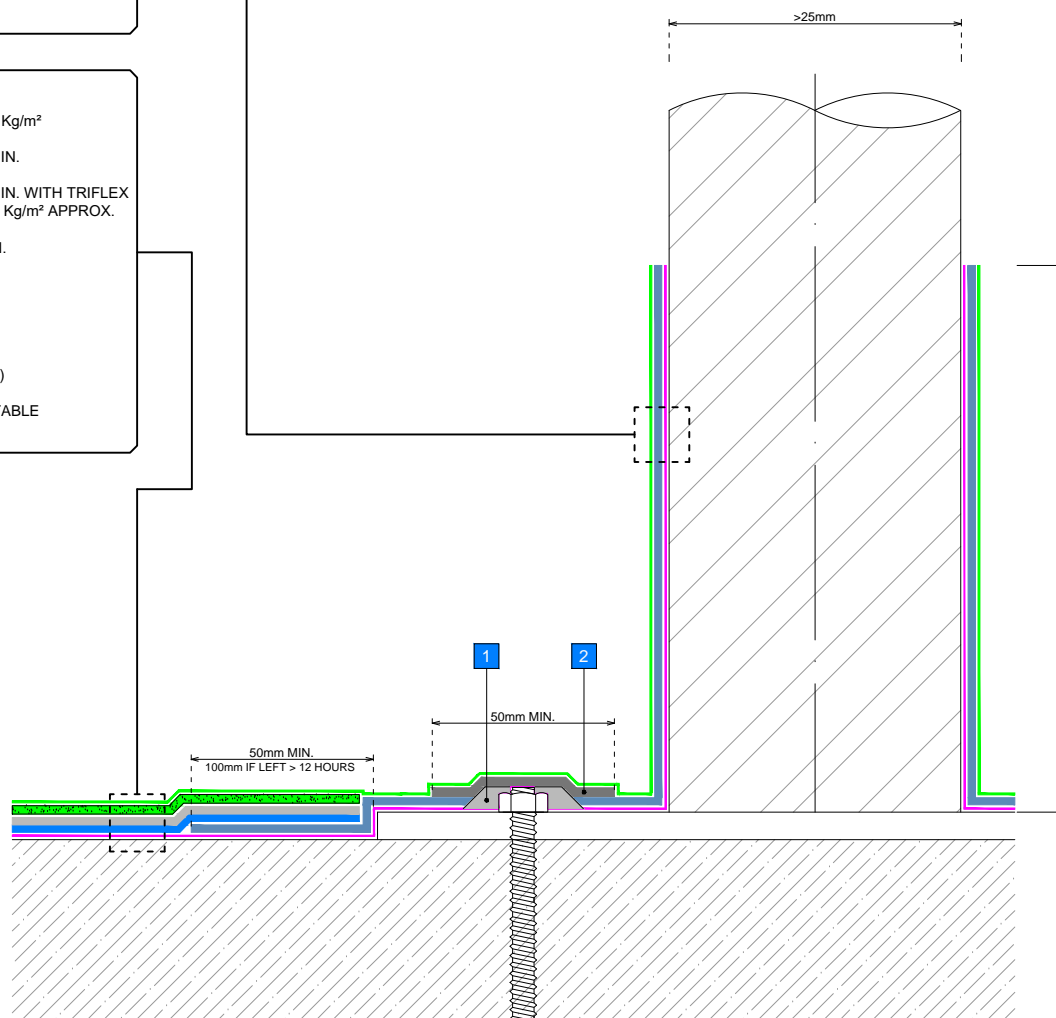


MAIN AREA WATERPROOFING



NOTES

- 1 STAR CUT REINFORCEMENT FLEECE AROUND FIXINGS AND MAKE GOOD WITH TRIFLEX CRYL PASTE
- 2 TRIFLEX PROFIBRE® @ 3.00 Kg/m² MIN. TO ENCAPSULATE FIXINGS

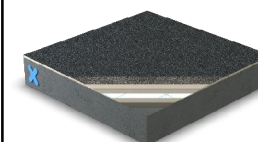


GENERAL NOTES

This drawing and any reference to structural / thermal elements should be treated as indicative only and read in conjunction with the Triflex Project specification proposal and relevant Triflex technical data. Details should be verified for accuracy and suitability as we specifically exclude any liability for errors, omissions or otherwise.

The drawing should not be reproduced or amended except with the written permission of Triflex. Do not scale, use figured dimensions only, and check all dimensions on site.

INDICATIVE SYSTEM BUILD-UP



SYSTEM

TRIFLEX BTS-P COLOURSEAL - SMALL GRAIN QUARTZ

PROJECT

STANDARD

DETAIL

SURFACE MOUNTED DETAIL >25mm

DRAWING NUMBER

BTS-P_CS_SGQ_057_SURFACE MOUNTED DETAIL GREATER THAN 25MM

SCALE

NTS

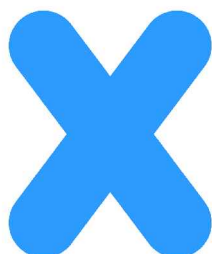
DATE

15/08/2018

Triflex
Delivering solutions together

Triflex (UK) Limited

Whitebridge Way | Stone | Staffs
ST15 8JS | Tel: 01785 819119
www.triflex.co.uk | info@triflex.co.uk



WALKWAYS | BALCONIES | TERRACES