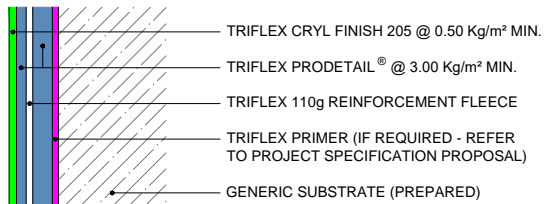
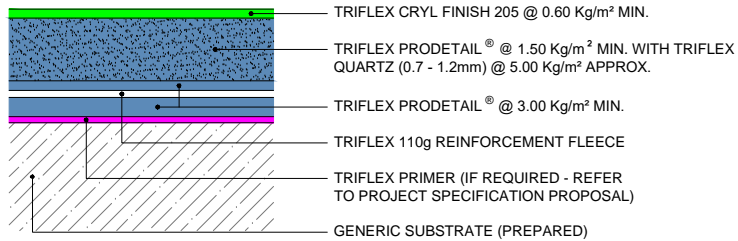


## DETAIL WATERPROOFING



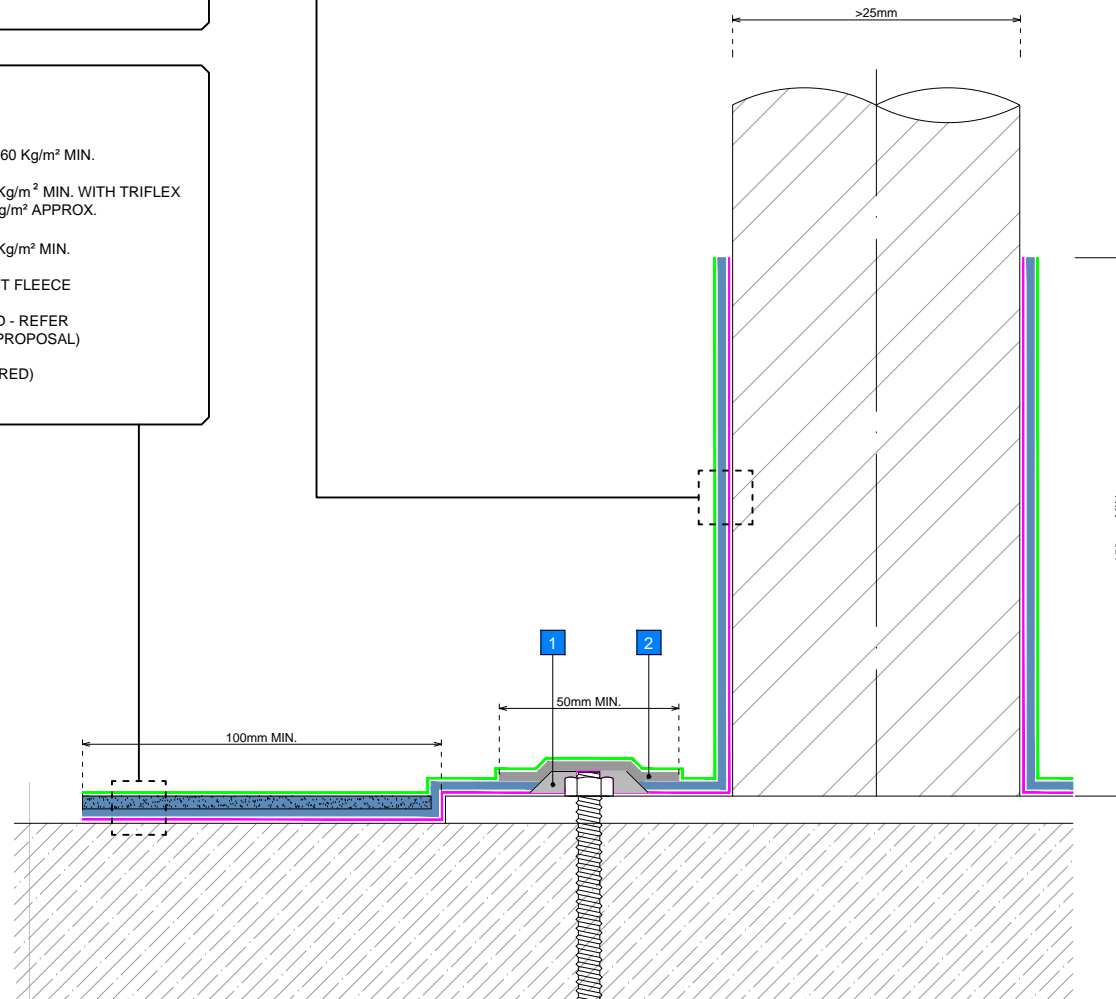
**NOTE:** HEAVY DUTY WEARING LAYER MAY BE EXTENDED ONTO VERTICAL / INCLINED SURFACES (IF REQUIRED)

## DETAIL WATERPROOFING (HEAVY DUTY)



## NOTES

- 1 STAR CUT REINFORCEMENT FLEECE AROUND FIXINGS AND MAKE GOOD WITH TRIFLEX CRYL PASTE
- 2 TRIFLEX PROFIBRE® @ 3.00 Kg/m² MIN. TO ENCAPSULATE FIXINGS

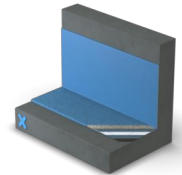


## GENERAL NOTES

This drawing and any reference to structural / thermal elements should be treated as indicative only and read in conjunction with the Triflex Project specification proposal and relevant Triflex technical data. Details should be verified for accuracy and suitability as we specifically exclude any liability for errors, omissions or otherwise.

The drawing should not be reproduced or amended except with the written permission of Triflex. Do not scale, use figured dimensions only, and check all dimensions on site.

## INDICATIVE SYSTEM BUILD-UP



## SYSTEM

TRIFLEX PRODETAIL® WITH HEAVY DUTY FINISH

## PROJECT

STANDARD

## DETAIL

SURFACE MOUNTED DETAIL  
>25mm

## DRAWING NUMBER

PRODETAIL\_HD\_057\_SURFACE  
MOUNTED DETAIL GREATER  
THAN 25MM

SCALE  
NTS

DATE  
26/06/2018

**Triflex**  
Delivering solutions together

Triflex (UK) Limited

Whitebridge Way | Stone | Staffs  
ST15 8JS | Tel: 01785 819119  
www.triflex.co.uk | info@triflex.co.uk



ROOFS | ROOF DETAILS | REPAIRS