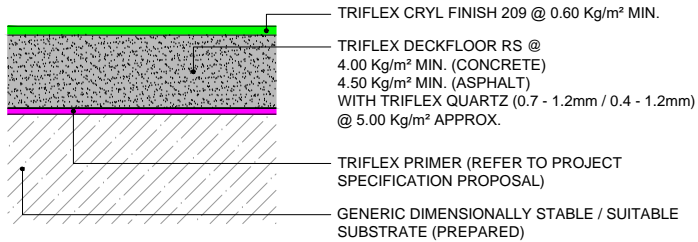
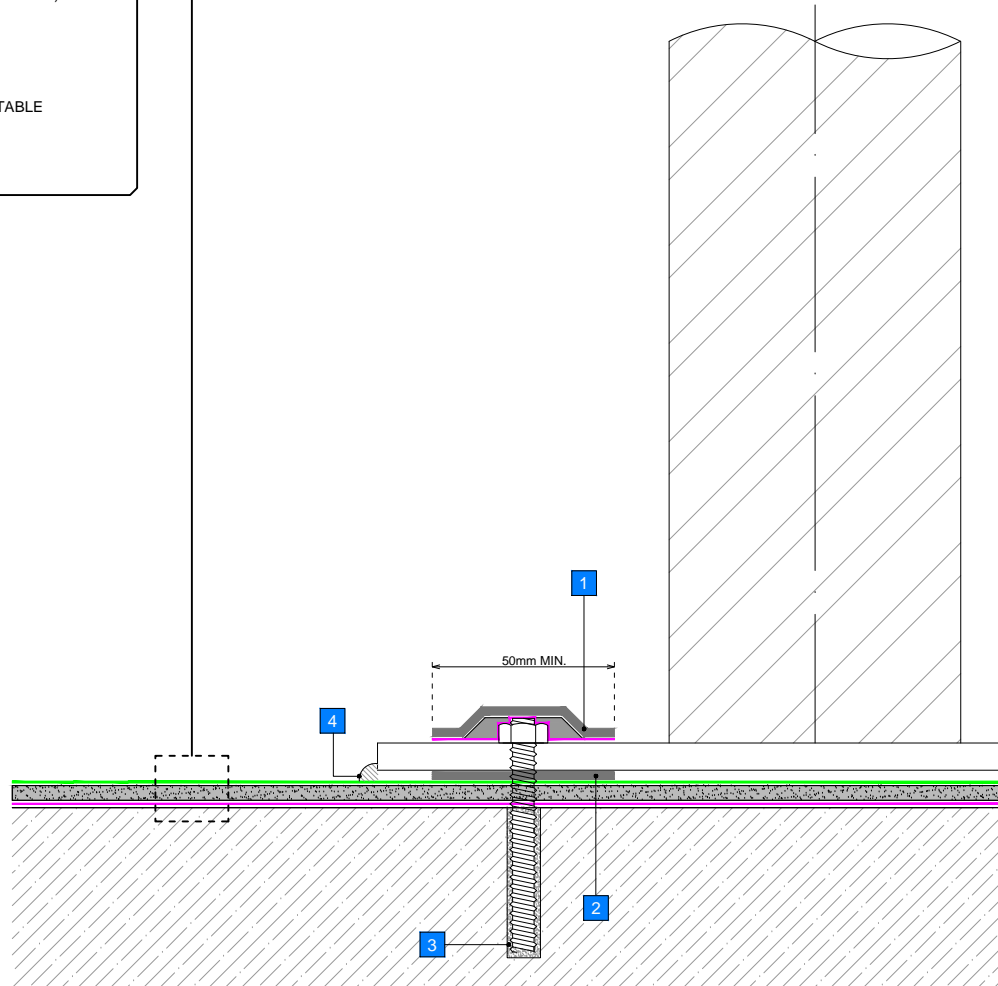


MAIN AREA WATERPROOFING



NOTES

- 1 TRIFLEX PROFIBRE® @ 3.00 Kg/m² MIN. TO ENCAPSULATE FIXINGS - APPLIED IN TWO APPLICATIONS @ 1.50 Kg/m² MIN.
- 2 TRIFLEX PROFIBRE® @ TO CREATE A GASKET WASHER
- 3 RESIN ANCHORBOLT
- 4 SEAL USING PROPRIETARY SOLVENT FREE MASTIC

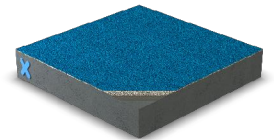


GENERAL NOTES

This drawing and any reference to structural / thermal elements should be treated as indicative only and read in conjunction with the Triflex Project specification proposal and relevant Triflex technical data. Details should be verified for accuracy and suitability as we specifically exclude any liability for errors, omissions or otherwise.

The drawing should not be reproduced or amended except with the written permission of Triflex. Do not scale, use figured dimensions only, and check all dimensions on site.

INDICATIVE SYSTEM BUILD-UP



SYSTEM

TRIFLEX DECKFLOOR WITH QUARTZ 0.7 - 1.2mm OR 0.4 - 1.2mm

PROJECT

STANDARD

DETAIL

SURFACE MOUNTED DETAIL - INSTALLATION AFTER PROTECTION AND SURFACING

DRAWING NUMBER

DECKFLOOR WITH QUARTZ _043 SURFACE MOUNTED DETAIL - INSTALLATION AFTER PROTECTION AND SURFACING

SCALE

NTS

DATE

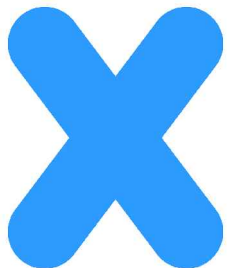
13/08/2018

Triflex

Delivering solutions together

Triflex (UK) Limited

Whitebridge Way | Stone | Staffs
ST15 8JS | Tel: 01785 819119
www.triflex.co.uk | info@triflex.co.uk



CAR PARK | MARKINGS | REPAIRS