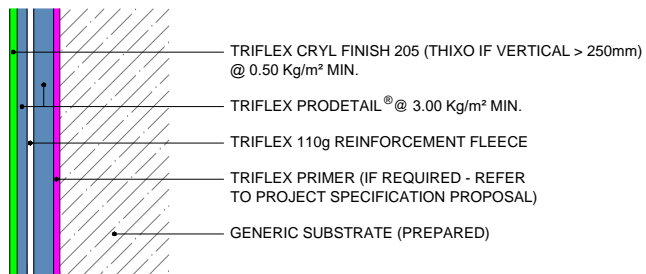
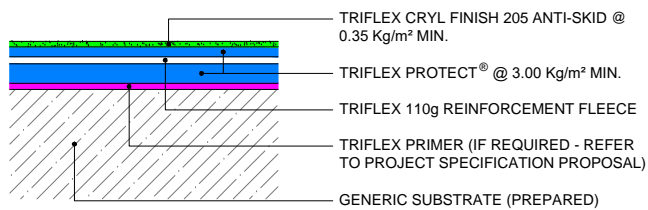


DETAIL WATERPROOFING

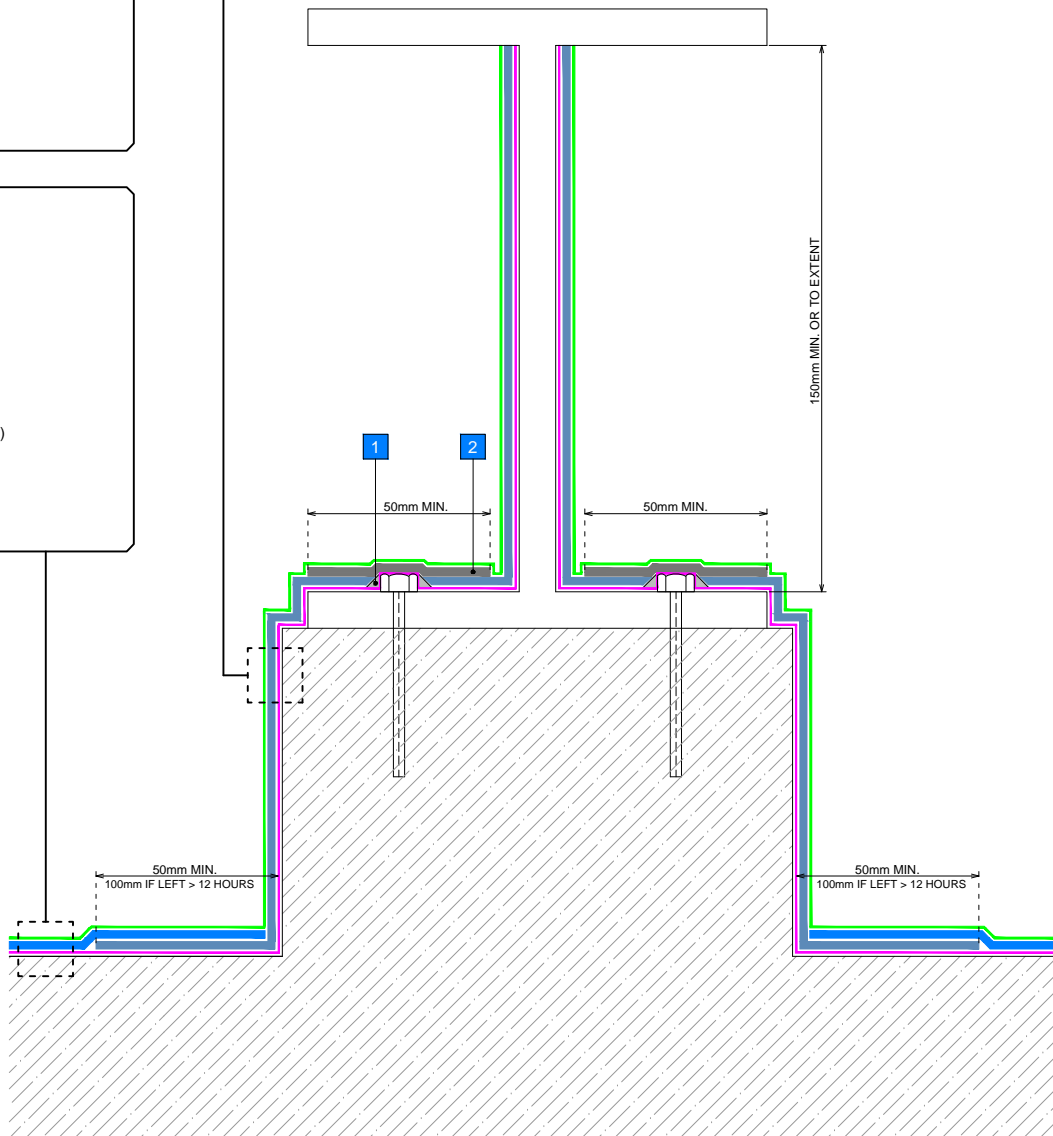


MAIN AREA WATERPROOFING



NOTES

- 1 STAR CUT REINFORCEMENT FLEECE AROUND FIXINGS AND MAKE GOOD WITH TRIFLEX CRYL PASTE
- 2 TRIFLEX PROFIBRE® @ 3.00 Kg/m² MIN. APPLIED IN TWO APPLICATIONS @ 1.50 Kg/m² MIN. TO ENCAPSULATE FIXINGS

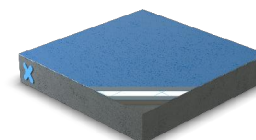


GENERAL NOTES

This drawing and any reference to structural / thermal elements should be treated as indicative only and read in conjunction with the Triflex Project specification proposal and relevant Triflex technical data. Details should be verified for accuracy and suitability as we specifically exclude any liability for errors, omissions or otherwise.

The drawing should not be reproduced or amended except with the written permission of Triflex. Do not scale, use figured dimensions only, and check all dimensions on site.

INDICATIVE SYSTEM BUILD-UP



SYSTEM

TRIFLEX PROTECT® WITH ANTI-SKID FINISH

PROJECT

STANDARD

DETAIL

PLINTH WITH SURFACE MOUNTED DETAIL

DRAWING NUMBER

PROTECT_AS_255_PLINTH WITH SURFACE MOUNTED DETAIL

SCALE

NTS

DATE

21/03/2019

REVISION

A

Triflex
Delivering solutions together

Triflex (UK) Limited

Whitebridge Way | Stone | Staffs
ST15 8JS | Tel: 01785 819119
www.triflex.co.uk | info@triflex.co.uk



ROOFS | ROOF DETAILS | REPAIRS