



CASE
STUDY

NEW BAILEY CAR PARK

Triflex
Delivering solutions together.

MULTI-STOREY CAR PARK
SALFORD, MANCHESTER

NEW BAILEY STREET CAR PARK

Area
2000m²

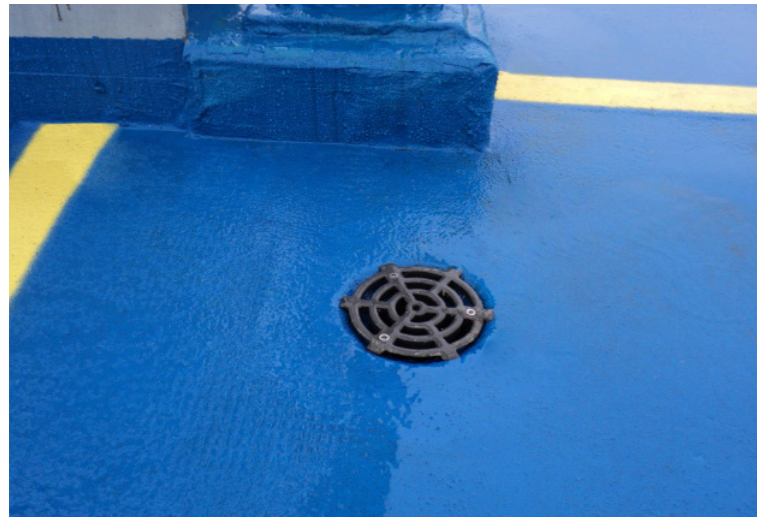
Systems
Triflex ProDeck

The challenge

In conjunction with English Cities Fund, Salford City Centre is currently undergoing multi-million pound regeneration, aiming to encourage further investment in the area. As part of the regeneration work, The New Bailey development has already seen the successful completion of a 143-bed Premier Inn and plans are in place for a new 8-storey office, dubbed One New Bailey. 2014 also saw the completion of a new-build, £12m, nine-storey car park, NCP New Bailey.

A rigorous specification was set out for a waterproof deck coating to the top decks of the car park, one very important aspect of which was compliance with BS EN 1504-2, specifically, the ability to deal with dynamic cracking of up to 0.3mm at -20°C.





The solution

The system that ticked all the boxes of the Client's specification was the totally waterproof, BS EN 1504-2 compliant Triflex ProDeck. Triflex ProDeck, a thick layer, fully reinforced car park waterproofing and surfacing system has been specifically designed for heavily trafficked car parks.

The system incorporates a unique reinforcement, Triflex ProMesh, which uses force distribution to accommodate movement and cracking in the structure. In addition to this crack bridging ability, the solvent free system offers high levels of anti-skid and resistance to common contaminants, such as de-icing salts, fuel spills, battery acid and oil. As Triflex resins are UV stable, the visually enhanced car park will retain its colour over time.

Temperamental weather proves to be an issue on most construction sites and NCP New Bailey was no exception. However, the Triflex ProDeck waterproof surfacing system offers exceptionally rapid curing times, even at low temperatures, ensuring that weather windows were maximised without any extension to the programme of works.

The new build car park was completed on time and on budget. With the latest parking technology in place, including Automatic Number Plate Recognition, pre-booking facilities and capacity level monitoring, it is an important support system to the wider New Bailey scheme.

The use of Triflex ProDeck® provided a waterproof deck coating to the top decks of the car park, one very important aspect of which was compliance with BS EN 1504-2, specifically, the ability to deal with dynamic cracking of up to 0.3mm at -20°C.

Triflex

Delivering solutions together.

Triflex is the leading European specialist in cold liquid applied resins. Our high-quality systems provide reliable and lasting waterproofing, surfacing, protection and markings for roofs, walkways, balconies, terraces and car parks. We are a family owned and operated company that provides individual solutions worldwide. From our production facilities based in Minden, Germany, we have been researching and developing solutions designed to protect and repair the built environment for more than 40 years.

From our UK headquarters based in Stone, Staffordshire we pride ourselves on providing our clients with tailored solutions and exceptional levels of service and support throughout all stages of their project. From conducting in-depth site surveys, to our comprehensive testing and off-site and on-site support, we ensure that your project is completed on time and to the highest standards. All Triflex solutions are certified to the highest standards and are backed up by long term meaningful warranties ensuring peace of mind.

☎ 01785 819119

🌐 www.triflex.co.uk

✉ info@triflex.co.uk

🌐 Triflex (UK) Ltd

🐦 @TriflexUK

Triflex (UK) Ltd. | Whitebridge Way | Stone | Staffordshire | ST15 8JS

System benefits Triflex ProDeck®

- Totally waterproof
- Dynamic crack bridging
- Exceptional durability
- Totally cold applied
- BS EN 1504 compliant
- Exceptionally rapid curing even at low temperatures
- Highly abrasion and impact resistant
- Resistant to: de-icing salts, petrol, diesel, battery acid etc.
- Wide variety of colours and finishes

