



CASE  
STUDY

**Triflex**  
Delivering solutions together.

Car park waterproofing, surfacing and marking  
SOUTHPORT

# TULKETH STREET

**Area**  
12,000m<sup>2</sup>

**Authorised Contractor**  
Volkerlaser

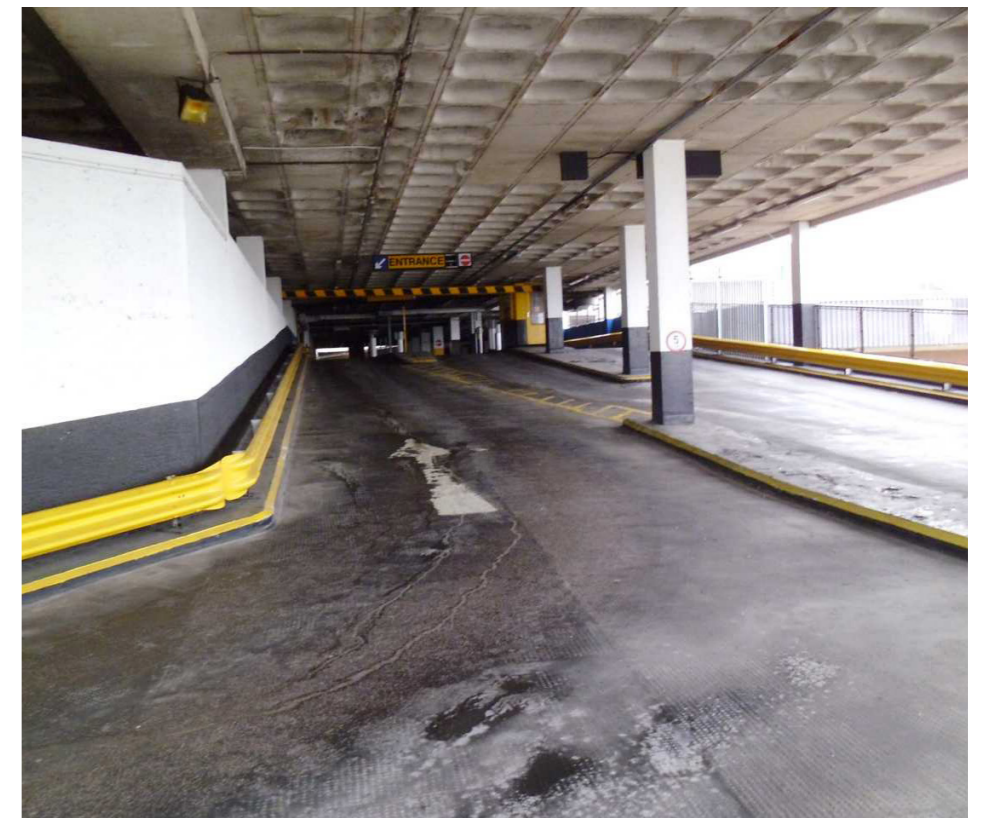
**Systems**  
Triflex ProPark®  
Triflex DeckFloor

# The challenge

April 2016 saw the start of an impressive new retail development in Southport town centre, along with the renovation of the adjacent 12,000m<sup>2</sup> multi-storey car park, which included an internal deck over occupied premises and an exposed top deck. Located on Tulketh Street amongst other small retail businesses, the building had remained unused for almost 12 months and had previously been home to a variety of supermarkets. The multi-million pound investment from Sports Direct saw the creation of four units within the existing ground floor of the building, including three retail stores and a state-of-the-art gym.

Due to their experience and knowledge of car park construction, coupled with unsurpassed levels of performance, Triflex were chosen to waterproof, surface and protect the multi-storey car park which lies directly above the store. Working collaboratively with contractor **VolkerLaser**, Triflex performed extensive on-site testing to establish the various requirements for each level, the condition of the existing substrate to establish which Triflex waterproofing and surfacing systems were needed to deliver the ideal solution.

This testing revealed a number of different issues. There was extensive damage which included severe cracking, blistering and indentations of the existing asphalt. There was significant ponding in areas of the car park and contamination from oil, particularly on the internal deck. The existing substrate was so worn down in some areas that the aggregate underneath was beginning to show through, causing a potential slip hazard.





# The solution

Triflex performed core testing which revealed the asphalt substrate of the first level of the multi-storey car park had suffered extensive damage, particularly in one area where there had previously been a bakery directly underneath. The heat created from the bakery below penetrated the roof above causing condensation in the structure, causing the structural topping of the car park to deteriorate and collapse. Once the asphalt and Lytag screed had been removed and a new screed laid, **Triflex ProPark® HD** was then installed.

Designed for car park decks and ramps over occupied premises and high risk decks and ramps that are subject to high levels of structural movement, **Triflex ProPark® HD** is a heavy duty BBA and EN1504-2 certified system, that has an excellent track record and offers maximum protection.

# Triflex

Delivering solutions together.

Triflex is the leading European specialist in cold liquid applied resins. Our high-quality systems provide reliable and lasting waterproofing, surfacing, protection and markings for roofs, walkways, balconies, terraces and car parks. We are a family owned and operated company that provides individual solutions worldwide. From our production facilities based in Minden, Germany, we have been researching and developing solutions designed to protect and repair the built environment for more than 40 years.

From our UK headquarters based in Stone, Staffordshire we pride ourselves on providing our clients with tailored solutions and exceptional levels of service and support throughout all stages of their project. From conducting in-depth site surveys, to our comprehensive testing and off-site and on-site support, we ensure that your project is completed on time and to the highest standards. All Triflex solutions are certified to the highest standards and are backed up by long term meaningful warranties ensuring peace of mind.

☎ 01785 819119

🌐 [www.triflex.co.uk](http://www.triflex.co.uk)

✉ [info@triflex.co.uk](mailto:info@triflex.co.uk)

🌐 Triflex (UK) Ltd

🐦 @TriflexUK

Triflex (UK) Ltd. | Whitebridge Way | Stone | Staffordshire | ST15 8JS

## System benefits Triflex ProPark HD®

- Proven, fully reinforced, elastomeric waterproofing membrane
- Compatible with virtually all substrates including asphalt
- High levels of anti-skid
- Totally cold liquid applied technology
- Rapid curing system - even at low temperatures
- Maximum design options
- Certified to the highest standards

*Finish*

*Waterproof wearing layer*

*Reinforced waterproofing*

*Primer*

