

Application video:



# Triflex

Delivering solutions together.

## Triflex FlexSealer Application Guide.



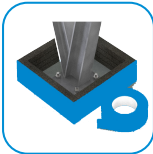
### 1. Personal Protective Equipment (PPE) and Preparation

Ensure appropriate PPE is used including nitrile gloves, safety glasses, and long sleeved clothing. Ensure surfaces are clean, dry and free from any contaminants.



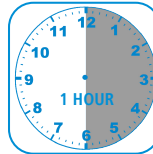
### 6. Pouring and filling

Within 5 minutes of mixing, carefully pour the mixed Triflex FlexSealer into the frame, hole or joint.



### 2. Frame creation

Where used to form a pipe / pitch pocket, create a frame around detail using Triflex FlexSealer Frame Kit, metal angle, timber or other suitable frame which prevents underflow of the Triflex FlexSealer. \*



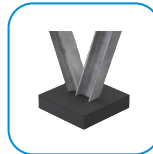
### 7. Curing

Triflex FlexSealer is rainproof in approximately 30 minutes and fully cured after approximately 1 hour (depending upon temperature). \*\*



### 3. Combining the contents

When ready to use, remove resin drum from the kit. Shake well. Remove the lid and the seal. Pour entire contents onto the filler in the kit bucket.



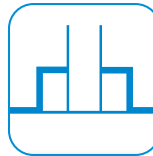
### 8. Frame removal

Once hardened, if required, carefully remove the frame.



### 4. Mixing

Mix the resin and filler thoroughly using a stirring stick or slow speed drill with paddle mixer until the material achieves a uniform, wet consistency with no dry material.



### 9. Waterproofing

Finish the detail with waterproofing in accordance with NHBC approved detail.



### 5. Re-mixing

Leave to stand for 1 minute and then thoroughly re-mix.

Triflex FlexSealer Frame Kit  
Product code 42415-200-T

Comprising: 1.5m x 50mm x 25mm Triflex FlexSealer Frame (flexible) and 5m x 25mm Triflex FlexSealer Tape (double sided).



\* Triflex FlexSealer will bond to most substrates except the Triflex FlexSealer Frame Kit. To de-bond from other frame materials, use gaffer / duct tape to the internal face of frame.

\*\* Based on +20°C. Rainproof and cure times will be extended at lower temperatures and reduced at higher temperatures.