

Triflex FlexSealer



Use

Pourable, flexible, waterproof sealant for pipe pockets, pitch pockets, penetrations, surface mounted details, filling holes and filling joints with low movement.

Properties

- Totally cold applied
- Rapid curing
- Can be applied at 0°C to 35°C
- Easy to mix by stirring stick or paddle mixer
- Flows around complex details
- Self-levelling
- Waterproof
- Suitable for waterproof coating in accordance with NHBC approved details
- Tough and durable
- High levels of compatibility
- Excellent adhesion
- Solvent and isocyanate free

Components

Component	Product	Ratio
Resin	Triflex FlexSealer	1 part
Filler	Triflex FlexSealer Filler	4 parts

Packaging

Component	Pack size:
Combi kit	Resin: 1.00Kg Filler: 4.00Kg

Colour(s)

RAL 7021 Black grey

Application conditions

Condition	Value
Ambient and substrate temperature	0°C to +35°C
Relative atmospheric humidity	Up to 95%
Dew point	3°C above dew point

Substrate preparation

Ensure that the substrate is clean, dry and free from dust, laitance, grease, oil and any other contaminants. Clean plastics and metals with Triflex Cleaner and overlay between 20 and 60 minutes after cleaning.

Compatible with:

- Coatings (polyurethane, polyurea & polymethyl methacrylate)
- Asphalt
- Metals / coated metals
- Bitumen
- Felt
- Hot melt
- Timber
- Plastics
- PVC single-ply membrane



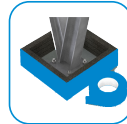
Application guide



1. Personal Protective Equipment (PPE)
Ensure appropriate PPE is used including nitrile gloves, safety glasses, and long sleeved clothing.



2. Preparation
Ensure surfaces are clean, dry and free from any contaminants.



3. Frame creation
Where used to form a pipe / pitch pocket, create a frame around detail using Triflex FlexSealer Frame Kit, metal angle, timber or other suitable frame which prevents underflow of the Triflex FlexSealer.*



4. Combining the contents
When ready to use, remove resin drum from the kit. Shake well. Remove the lid and the seal. Pour entire contents onto the filler in the kit bucket.



5. Mixing
Mix the resin and filler thoroughly using a stirring stick or slow speed drill with paddle mixer until the material achieves a uniform, wet consistency with no dry material.



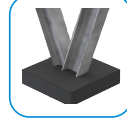
6. Re-mixing
Leave to stand for 1 minute and then thoroughly re-mix.



7. Pouring and filling
Within 5 minutes of mixing, carefully pour the mixed Triflex FlexSealer into the frame, hole or joint.



8. Curing
Triflex FlexSealer is rainproof in approximately 30 minutes and fully cured after approximately 1 hour (depending upon temperature).**



9. Frame removal
Once hardened, if required, carefully remove the frame.



10. NHBC Detailing
If required, finish the detail with waterproofing in accordance with NHBC approved details.

* Triflex FlexSealer will bond to most substrates except the Triflex FlexSealer Frame Kit. To de-bond from other frame materials, use gaffer / duct tape to the internal face of frame.
** Based on +20°C. Rainproof and cure times will be extended at lower temperatures and reduced at higher temperatures.

Pot life (at 20°C)

Approximately 15 minutes.

Note: Times will be slightly increased at lower temperatures and slightly reduced at higher temperatures.

Density / volume

Approximately 1.92Kg/mm/m²

Layer thickness

5 - 50mm

Note: For thickness in excess of 50mm use multiple layers.

Curing time

Condition	Time
Rainproof	Approximately 30 minutes
Can be walked on / over-coated	Approximately 45 minutes
Able to withstand stress	Approximately 1 hour

Note: Times will be slightly increased at lower temperatures and slightly reduced at higher temperatures.

Interruptions during works

If work is interrupted for more than 12 hours or if soiled by rain etc., use Triflex Cleaner to clean and reactivate the transition area. Overlay after Triflex Cleaner has evaporated and a minimum 20 minutes / maximum 60 minutes after application.

Tool cleaning

Clean tools with Triflex Cleaner.

Storage / shelf life

Store unopened in a cool, dry place above freezing and in the original container.

Shelf life if stored correctly: minimum 6 months.

Health and safety

Refer to Safety Data Sheets.

Disposal information

Refer to Safety Data Sheets for recommended EWC waste codes.

Notes

The advice we provide on the application of our products is based on extensive development work and many years of experience, and is given to the best of our knowledge. The wide variety of requirements for a building under the most diverse conditions mean that it is necessary for the contractor to test the product for suitability in each case. Triflex reserve the right to make alterations in keeping with technical developments or improvements.

Only the most recent version of this data sheet is valid.