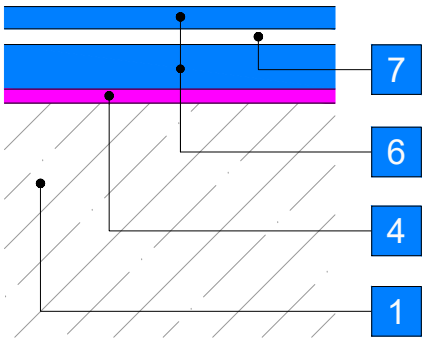
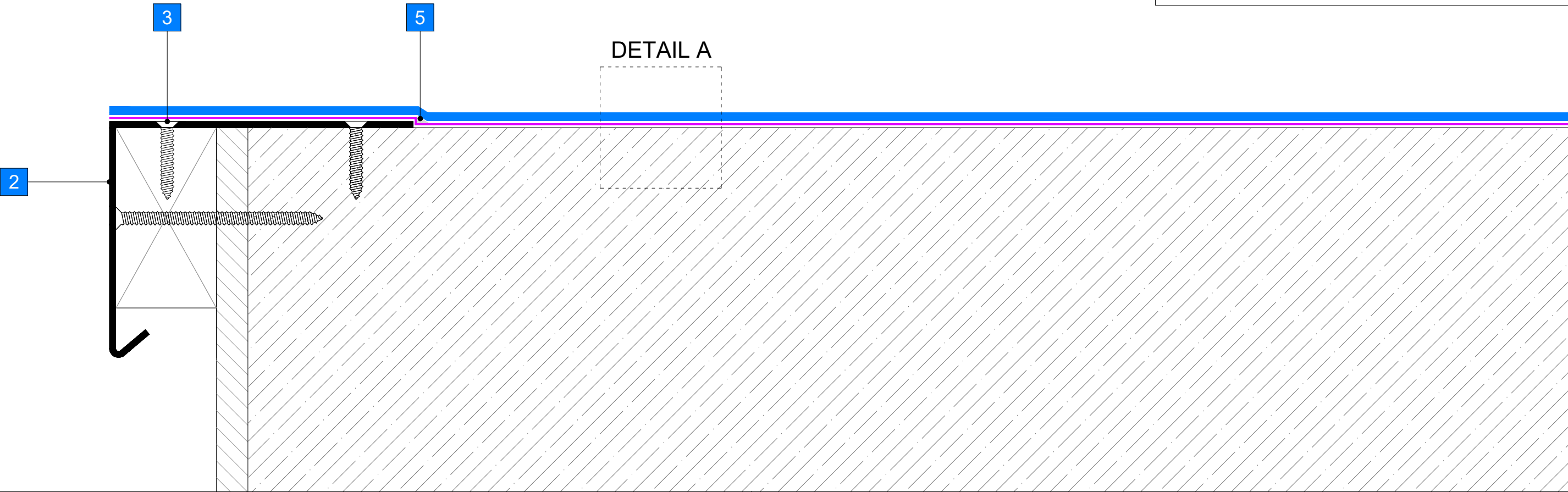


DETAIL A



LEGEND

- 1 GENERIC SUBSTRATE (PREPARED)
- 2 GRP / METAL PROFILED EDGE MECHANICALLY FIXED WITH TANALISED TIMBER SUPPORT BATTEN INSTALLED AS REQUIRED. SIZE AND POSITION TO BE DETERMINED ON SITE
- 3 COUNTERSUNK MECHANICAL FIXINGS WITH TRIFLEX CRYL PASTE OVER TO CREATE FLUSH FINISH
- 4 TRIFLEX PRIMER (IF REQUIRED - REFER TO PROJECT SPECIFICATION)
- 5 TRIFLEX CRYL PASTE APPLIED TO CREATE CHAMFERED PROFILE
- 6 TRIFLEX PROTECT® @ 3.00Kg/m² MIN.
- 7 TRIFLEX 110g REINFORCEMENT FLEECE



Triflex (UK) Limited
Whitebridge Way | Stone | Staffs
ST15 8JS | Tel: 01785 819119
www.triflex.co.uk | info@triflex.co.uk

GENERAL NOTES
This drawing is for illustrative purposes only and represents the typical application of Triflex systems. Any references to structural or thermal elements are indicative and for context only and should not be interpreted as design.

All information is based on Triflex's interpretation of current legislation, relevant standards, guidance and industry best practice at the date of issue. Whilst we have endeavoured to follow this guidance, it remains the responsibility of the Designer or Principal Designer to verify all details for accuracy, suitability, and compliance with applicable regulations. Triflex accepts no design responsibility or liability for errors, omissions or otherwise.

This drawing must be read in conjunction with the Triflex Project Specification Proposal (where issued, this takes precedence) and the relevant Triflex technical data current at the time.

Do not scale - use figured dimensions only and verify all dimensions on site. This drawing may not be reproduced or modified without written permission from Triflex.

| | |
|--------------------------|---------------|
| SYSTEM / PROJECT | |
| TRIFLEX PROTECT® | |
| DETAIL | |
| EDGE DETAIL WITH PROFILE | |
| DRAWING NUMBER | SCALE |
| TUK-S-PT-S-101 | Not to scale |
| REVISION NUMBER | REVISION DATE |
| - | 31/05/2025 |