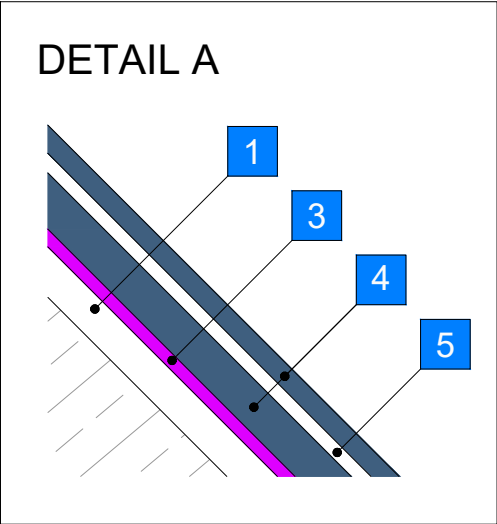
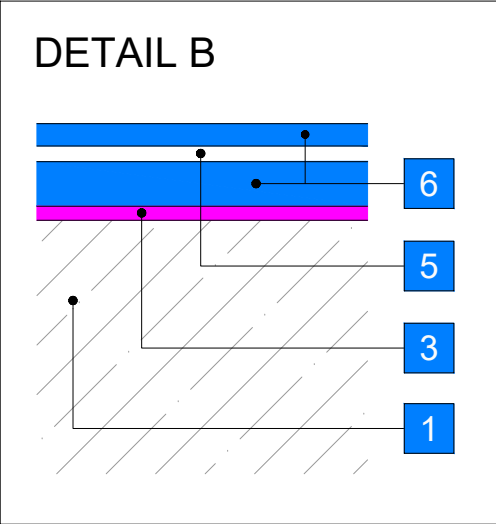


DETAIL A

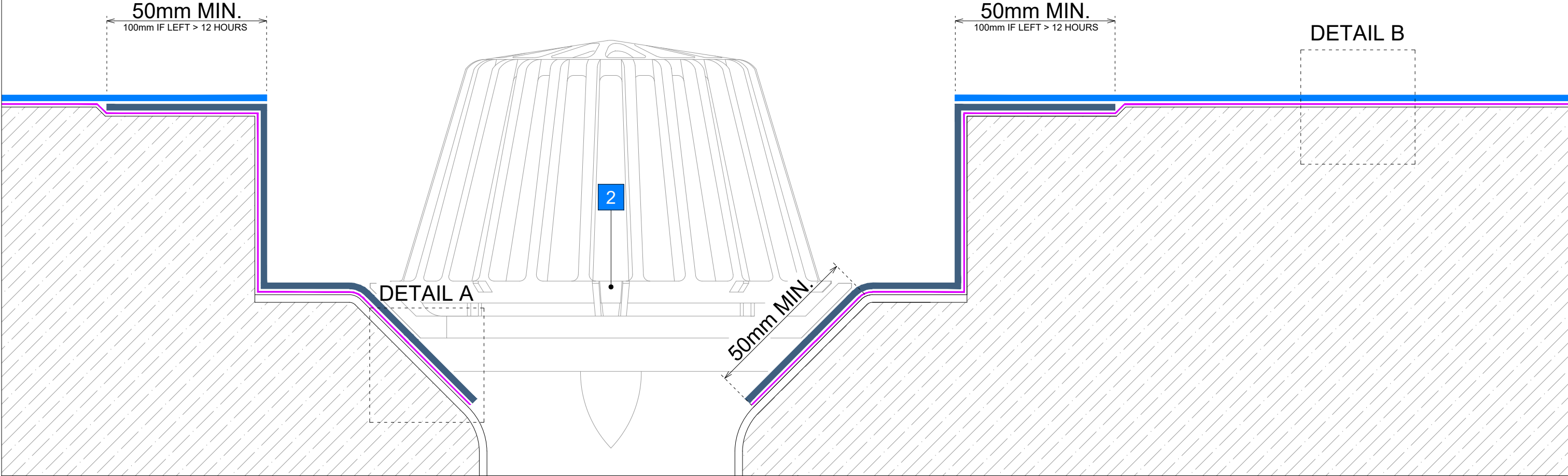


DETAIL B



LEGEND

- 1 GENERIC SUBSTRATE (PREPARED)
- 2 LIFT OUTLET COVER / GUARD TO ALLOW FOR PREPARATION, PRIMING AND WATERPROOFING INSTALLATION AND REINSTATE
- 3 TRIFLEX PRIMER (IF REQUIRED - REFER TO PROJECT SPECIFICATION PROPOSAL)
- 4 TRIFLEX PRODETAIL® @ 3.00Kg/m² MIN.
- 5 TRIFLEX 110g REINFORCEMENT FLEECE
- 6 TRIFLEX PROTECT® @ 3.00Kg/m² MIN.



Triflex
Delivering solutions together.

Triflex (UK) Limited
Whitebridge Way | Stone | Staffs
ST15 8JS | Tel: 01785 819119
www.triflex.co.uk | info@triflex.co.uk

GENERAL NOTES
This drawing is for illustrative purposes only and represents the typical application of Triflex systems. Any references to structural or thermal elements are indicative and for context only and should not be interpreted as design.

All information is based on Triflex's interpretation of current legislation, relevant standards, guidance and industry best practice at the date of issue. Whilst we have endeavoured to follow this guidance, it remains the responsibility of the Designer or Principal Designer to verify all details for accuracy, suitability, and compliance with applicable regulations. Triflex accepts no design responsibility or liability for errors, omissions or otherwise.

This drawing must be read in conjunction with the Triflex Project Specification Proposal (where issued, this takes precedence) and the relevant Triflex technical data current at the time.

Do not scale - use figured dimensions only and verify all dimensions on site. This drawing may not be reproduced or modified without written permission from Triflex.

SYSTEM / PROJECT	
TRIFLEX PROTECT®	
DETAIL	
SUMP OUTLET	
DRAWING NUMBER	SCALE
TUK-S-PT-S-253	Not to scale
REVISION NUMBER	REVISION DATE
-	31/05/2025