

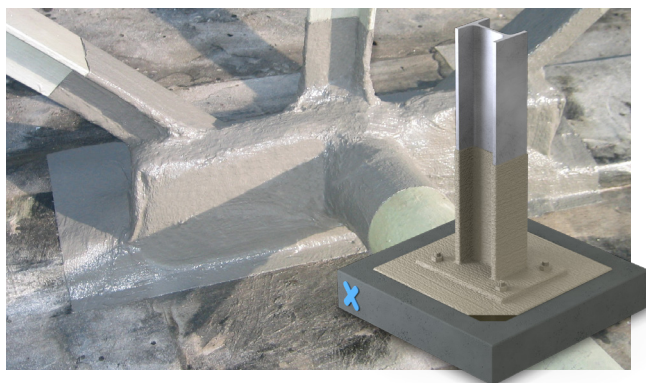


## System overview

# Triflex ProFibre

A fibre reinforced solution for intricate and extremely complex details

Details and penetrations which are highly complex and / or difficult to access are common and often impractical to waterproof using traditional materials or fabric reinforced liquid systems. Triflex ProFibre overcomes these issues by incorporating reinforcing fibres within our unique solvent free resin technology. With ultra rapid cure times, even at low temperatures, and unsurpassed levels of substrate compatibility, Triflex ProFibre is simple to apply and can be installed all year round for the fast and easy waterproofing of the most complex and tricky details.



## System highlights

### Waterproof down to the smallest detail

Triflex ProFibre can be used stand-alone, in combination with other Triflex waterproofing, surfacing and protection systems and in combination with other waterproofing technologies.

### Fibre reinforced technology

Triflex lead from the front. Featuring unique fibre reinforced resin technology that allows the quick and effective waterproofing of virtually all highly complex and restricted access details and penetrations.

### Cold applied, fast curing with rapid installation

Rapid curing and easy to install, Triflex allows details to be waterproofed seamlessly and quickly with the waterproofing being rainproof in as little as 30 minutes and cured in 45 minutes. Installation can be carried out all year round and Triflex ProFibre still cures quickly at temperatures down to 0°C. There is also no risk from hot works during installation as all Triflex materials are applied in a totally cold liquid form, curing to create a durable solution that lasts.

### Self-terminating

With Triflex ProFibre there is no need for termination bars as the system fully self-terminates. By forming such a strong bond with the substrate, and thanks to the fibre reinforced technology, the system leaves no opportunity for water to permeate behind.

### Simple application

The system could not be any simpler and easier to apply, just apply using a brush and any detail will be reliably waterproofed.

### The complete solution

Triflex ProFibre is not only a proven stand-alone system, but is also used in conjunction with other Triflex systems and other waterproofing technologies to provide a complete waterproofing solution.

### Colours and finishes

Triflex ProFibre is available in a range of standard colours or choose from more than 50 optional coloured finishes to create the perfect look - refer to Triflex colour card.

## Application areas

- I-beams
- Small in-situ penetrations
- Small surface mounted penetrations
- Small outlets
- Bolt heads
- Balustrades
- Cable penetrations
- Complex details and penetrations where fabric reinforcement is impractical
- Details and penetrations where access is restricted
- Metal roof eaves details

## Compatible substrates

- Felt
- Asphalt
- Bitumen
- Single ply membranes (e.g. PVC, PVC-P, EPDM, EVA, TPO, FPO, TPE, CPE, PIB, VET etc.)
- Cementitious materials (concrete, brickwork, masonry)
- Metals and coated metals
- Plastics
- Coatings (e.g. polyurethane, polyurea, polymethyl methacrylate)
- Solar reflective coatings
- Glass
- Timber

## Approvals

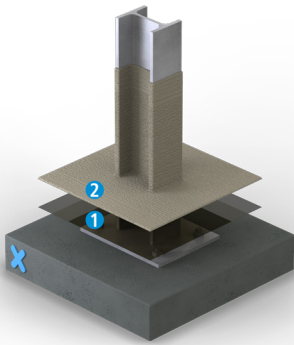
Certified to the European standards and classifications, including:

- Fire performance:
  - EN 13501-5: Class BROOF (t1)
  - EN 13501-1: Class E

### Manufacturer certification

- ISO 9001 Quality Management
- ISO 14001 Environmental Management
- ISO 50001 Energy Management

## System build-up and consumptions



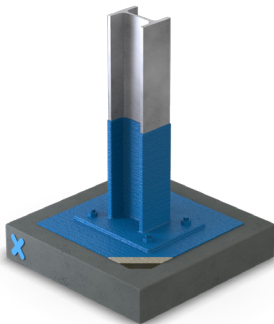
Layer	Product	Consumption <sup>(1)</sup>	Aggregate / Broadcast	Overcoat / traffic <sup>(2)</sup>
<b>1 Primers (if required)</b>	Triflex Cryl Primer 222 / 276	0.40Kg/m <sup>2</sup>	-	45 minutes
	Triflex Primer 610	0.06L/m <sup>2</sup> min.	-	20 minutes
	Triflex Metal Primer	0.08 - 0.10L/m <sup>2</sup>	-	30 minutes (spray) 60 minutes (moir roller / brush)
	Triflex Glass Primer	0.05L/m <sup>2</sup> approx.	-	20 minutes
<b>2 Reinforced waterproofing</b>	Triflex ProFibre	3.00Kg/m <sup>2</sup> min. (total)	-	45 minutes
<b>Optional finishes</b>				
<b>Coloured finish</b>	Triflex Cryl Finish 205 (details < 250mm high)	0.50Kg/m <sup>2</sup> min.	-	1 hour
	Triflex Cryl Finish 205 Thixo (details > 250mm high)	0.50Kg/m <sup>2</sup> min.	-	1 hour

<sup>(1)</sup> Minimum consumption assuming a smooth, even, non-absorbent substrate.

<sup>(2)</sup> The times stated are based on +20°C – the times will not be significantly extended at low temperatures.

## Optional finishes

### Coloured



Available in a wide range of colours - refer to Triflex colour card.

## Next steps

To ensure a thorough understanding of the construction, the substrate and to determine the most appropriate specification, Triflex carries out free of charge surveys, testing, investigations and analysis prior to preparing a bespoke project specification proposal. To arrange a meeting or site visit please contact Triflex Customer Services.

The advice we provide on the application of our products is based on extensive development work as well as many years of experience and is given to the best of our knowledge. However, the wide variety of requirements for a building under the most diverse conditions means that it is necessary for the Contractor to test the product for suitability in any given case. Triflex reserve the right to make alterations in keeping with technical developments or improvements.



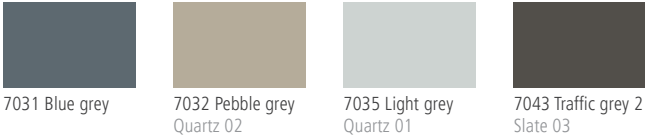
System overview

# Triflex ProFibre

A fibre reinforced solution for intricate and extremely complex details

**Notes:** There may be slight variations in shade between actual colours and those shown below.  
RAL colours are approximate.  
Special colours can be produced to order.

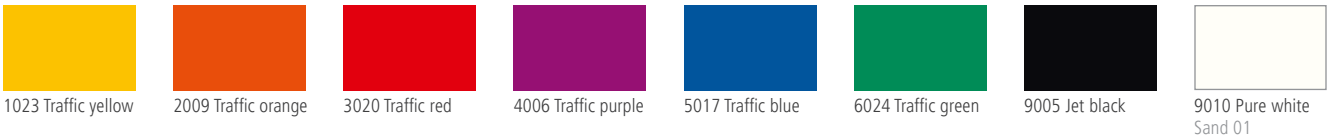
### Triflex ProFibre resin colours



### Optional finish colours: Greys



### Optional finish colours: RAL Traffic



### Optional finish colours: Triflex colours



Request a sample online at [triflex.co.uk/samplerrequest](http://triflex.co.uk/samplerrequest)

Find out more at [triflex.co.uk](http://triflex.co.uk)